

Product Name: DDX3Y Rabbit Polyclonal Antibody**Catalog #: APRab09882**

For research use only.

Summary

Description	Rabbit polyclonal Antibody
Host	Rabbit
Application	IHC, ICC/IF, ELISA
Reactivity	Human, Mouse
Conjugation	Unconjugated
Modification	Unmodified
Isotype	IgG
Clonality	Polyclonal
Form	Liquid
Concentration	1mg/ml
Storage	Aliquot and store at -20°C (valid for 12 months). Avoid freeze/thaw cycles.
Shipping	Ice bags
Buffer	Liquid in PBS containing 50% glycerol, 0.5% protective protein and 0.02% New type preservative N.
Purification	Affinity purification

Application

Dilution Ratio IHC 1:100-1:300, ICC/IF 1:50-1:200, ELISA 1:10000-1:20000

Molecular Weight

Antigen Information

Gene Name	DDX3Y
Alternative Names	DDX3Y; DBY; ATP-dependent RNA helicase DDX3Y; DEAD box protein 3; Y-chromosomal
Gene ID	8653.0
SwissProt ID	O15523
Immunogen	The antiserum was produced against synthesized peptide derived from human DDX3Y. AA range:41-90

Background

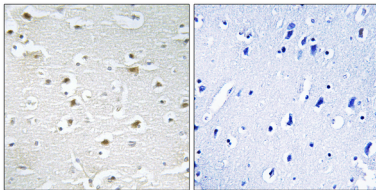
The protein encoded by this gene is a member of the DEAD-box RNA helicase family, characterized by nine conserved motifs,

included the conserved Asp-Glu-Ala-Asp (DEAD) motif. These motifs are thought to be involved in ATP binding, hydrolysis, RNA binding, and in the formation of intramolecular interactions. This protein shares high similarity to DDX3X, on the X chromosome, but a deletion of this gene is not complemented by DDX3X. Mutations in this gene result in male infertility, a reduction in germ cell numbers, and can result in Sertoli-cell only syndrome. Pseudogenes sharing similarity to both this gene and the DDX3X paralog are found on chromosome 4 and the X chromosome. Alternative splicing results in multiple transcript variants encoding different isoforms. [provided by RefSeq, Oct 2014],disease:DDX3Y is deleted in severe non-obstructive hypospermatogenesis [MIM:400042],,function:Probable ATP-dependent RNA helicase. May play a role in spermatogenesis.,similarity:Belongs to the DEAD box helicase family. DDX3/DED1 subfamily.,similarity:Contains 1 helicase ATP-binding domain.,similarity:Contains 1 helicase C-terminal domain.,subcellular location:Shuttles between the nucleus and the cytoplasm in an XPO1-dependent manner.,subunit:May interact with TDRD3.,tissue specificity:Testis-specific. Expressed predominantly in spermatogonia.,

Research Area

RIG-I-like receptor;

Image Data



Immunohistochemistry analysis of paraffin-embedded human brain tissue, using DDX3Y Antibody. The picture on the right is blocked with the synthesized peptide.