

Product Name: DDT Rabbit Polyclonal Antibody**Catalog #: APRab09870**

For research use only.

Summary

Description	Rabbit polyclonal Antibody
Host	Rabbit
Application	IHC, ICC/IF, ELISA
Reactivity	Human, Mouse, Rat
Conjugation	Unconjugated
Modification	Unmodified
Isotype	IgG
Clonality	Polyclonal
Form	Liquid
Concentration	1mg/ml
Storage	Aliquot and store at -20°C (valid for 12 months). Avoid freeze/thaw cycles.
Shipping	Ice bags
Buffer	Liquid in PBS containing 50% glycerol, 0.5% protective protein and 0.02% New type preservative N.
Purification	Affinity purification

Application

Dilution Ratio IHC 1:50-1:200, ICC/IF 1:50-1:200, ELISA 1:10000-1:20000

Molecular Weight

Antigen Information

Gene Name	DDT
Alternative Names	D-dopachrome decarboxylase (EC 4.1.1.84; D-dopachrome tautomerase; Phenylpyruvate tautomerase II)
Gene ID	1652.0
SwissProt ID	P30046
Immunogen	Synthetic peptide from human protein at AA range: 50-90

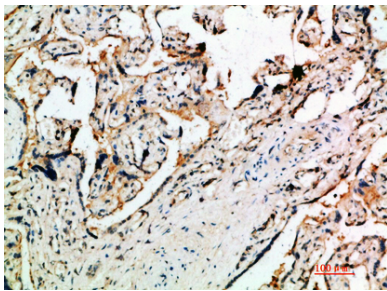
Background

D-dopachrome tautomerase converts D-dopachrome into 5,6-dihydroxyindole. The DDT gene is related to the migration

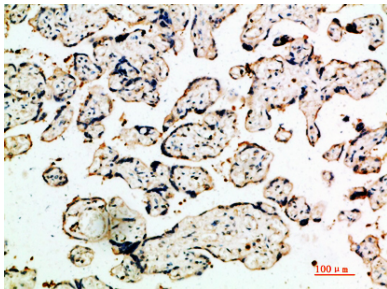
inhibitory factor (MIF) in terms of sequence, enzyme activity, and gene structure. DDT and MIF are closely linked on chromosome 22. [provided by RefSeq, Jul 2008],catalytic activity:D-dopachrome = 5,6-dihydroxyindole + CO(2),,function:Tautomerization of D-dopachrome with decarboxylation to give 5,6-dihydroxyindole (DHI),,similarity:Belongs to the MIF family,,subunit:Homotrimer.,

Research Area

Image Data



Immunohistochemical analysis of paraffin-embedded human-placenta, antibody was diluted at 1:200



Immunohistochemical analysis of paraffin-embedded human-placenta, antibody was diluted at 1:200