
Product Name: DCAMKL2 Rabbit Polyclonal Antibody**Catalog #: APRab09829**

For research use only.

Summary

Description	Rabbit polyclonal Antibody
Host	Rabbit
Application	WB,ICC/IF,ELISA
Reactivity	Human,Mouse
Conjugation	Unconjugated
Modification	Unmodified
Isotype	IgG
Clonality	Polyclonal
Form	Liquid
Concentration	1mg/ml
Storage	Aliquot and store at -20°C (valid for 12 months). Avoid freeze/thaw cycles.
Shipping	Ice bags
Buffer	Liquid in PBS containing 50% glycerol, 0.5% protective protein and 0.02% New type preservative N.
Purification	Affinity purification

Application

Dilution Ratio	WB 1:500-1:2000,ICC/IF 1:200-1:1000,ELISA 1:5000-1:20000
Molecular Weight	83kDa

Antigen Information

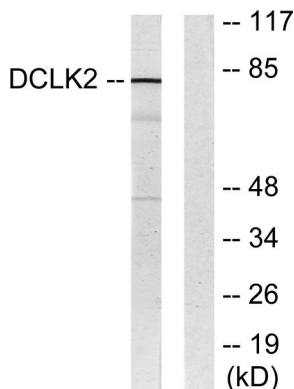
Gene Name	DCLK2 DCLK2; DCAMKL2; DCDC3B; DCK2; Serine/threonine-protein kinase DCLK2; CaMK-like CREB
Alternative Names	regulatory kinase 2; CL2; CLICK-II; CLICK2; Doublecortin domain-containing protein 3B; Doublecortin-like and CAM kinase-like 2; Doublecortin-like kinase 2
Gene ID	166614.0
SwissProt ID	Q8N568
Immunogen	The antiserum was produced against synthesized peptide derived from human DCLK2. AA range:1-50

Background

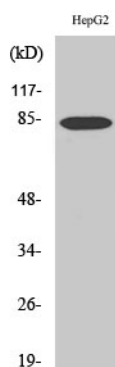
This gene encodes a member of the protein kinase superfamily and the doublecortin family. The protein encoded by this gene contains two N-terminal doublecortin domains, which bind microtubules and regulate microtubule polymerization, a C-terminal serine/threonine protein kinase domain, which shows substantial homology to Ca²⁺/calmodulin-dependent protein kinase, and a serine/proline-rich domain in between the doublecortin and the protein kinase domains, which mediates multiple protein-protein interactions. The microtubule-polymerizing activity of the encoded protein is independent of its protein kinase activity. Mouse studies show that the DCX gene, another family member, and this gene share function in the establishment of hippocampal organization and that their absence results in a severe epileptic phenotype and lethality, as described in human patients with lissencephaly. Multiple alternacatalytic activity:ATP + a protein = ADP + a phosphoprotein.,similarity:Belongs to the protein kinase superfamily.,similarity:Belongs to the protein kinase superfamily. CAMK Ser/Thr protein kinase family. CaMK subfamily.,similarity:Contains 1 protein kinase domain.,similarity:Contains 2 doublecortin domains.,

Research Area

Image Data



Western blot analysis of lysates from HepG2 cells, using DCLK2 Antibody. The lane on the right is blocked with the synthesized peptide.



Western Blot analysis of various cells using DCAMKL2 Polyclonal Antibody