

---

**Product Name: DACA-1 Rabbit Polyclonal Antibody****Catalog #: APRab09776**

For research use only.

**Summary**

<b>Description</b>	Rabbit polyclonal Antibody
<b>Host</b>	Rabbit
<b>Application</b>	WB,IHC,ICC/IF,ELISA
<b>Reactivity</b>	Human,Mouse,Rat
<b>Conjugation</b>	Unconjugated
<b>Modification</b>	Unmodified
<b>Isotype</b>	IgG
<b>Clonality</b>	Polyclonal
<b>Form</b>	Liquid
<b>Concentration</b>	1mg/ml
<b>Storage</b>	Aliquot and store at -20°C (valid for 12 months). Avoid freeze/thaw cycles.
<b>Shipping</b>	Ice bags
<b>Buffer</b>	Liquid in PBS containing 50% glycerol, 0.5% protective protein and 0.02% New type preservative N.
<b>Purification</b>	Affinity purification

**Application**

<b>Dilution Ratio</b>	WB 1:500-1:2000,IHC 1:100-1:300,ICC/IF 1:50-1:200,ELISA 1:5000-1:10000
<b>Molecular Weight</b>	61kDa

**Antigen Information**

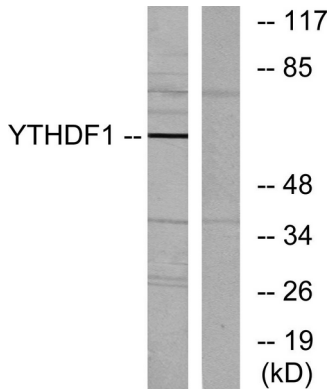
<b>Gene Name</b>	YTHDF1
<b>Alternative Names</b>	YTHDF1; C20orf21; YTH domain family protein 1; Dermatomyositis associated with cancer putative autoantigen 1; DACA-1
<b>Gene ID</b>	54915.0
<b>SwissProt ID</b>	Q9BYJ9
<b>Immunogen</b>	The antiserum was produced against synthesized peptide derived from human YTHDF1. AA range:1-50

**Background**

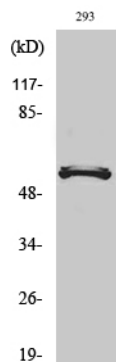
similarity:Contains 1 YTH domain.,similarity:Contains 1 YTH domain.,

## Research Area

## Image Data



Western blot analysis of lysates from 293 cells, using YTHDF1 Antibody. The lane on the right is blocked with the synthesized peptide.



Western Blot analysis of various cells using DACA-1 Polyclonal Antibody