
Product Name: D3DR Rabbit Polyclonal Antibody**Catalog #: APRab09768**

For research use only.

Summary

Description	Rabbit polyclonal Antibody
Host	Rabbit
Application	WB,ELISA
Reactivity	Human,Mouse,Rat
Conjugation	Unconjugated
Modification	Unmodified
Isotype	IgG
Clonality	Polyclonal
Form	Liquid
Concentration	1mg/ml
Storage	Aliquot and store at -20°C (valid for 12 months). Avoid freeze/thaw cycles.
Shipping	Ice bags
Buffer	Liquid in PBS containing 50% glycerol, 0.5% protective protein and 0.02% New type preservative N.
Purification	Affinity purification

Application

Dilution Ratio	WB 1:500-1:2000,ELISA 1:10000-1:20000
Molecular Weight	44kDa

Antigen Information

Gene Name	DRD3
Alternative Names	DRD3; D(3) dopamine receptor; Dopamine D3 receptor
Gene ID	1814.0
SwissProt ID	P35462
Immunogen	Synthesized peptide derived from D3DR . at AA range: 181-230

Background

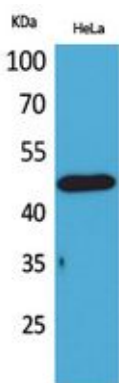
This gene encodes the D3 subtype of the five (D1-D5) dopamine receptors. The activity of the D3 subtype receptor is mediated by G proteins which inhibit adenylyl cyclase. This receptor is localized to the limbic areas of the brain, which are associated with

cognitive, emotional, and endocrine functions. Genetic variation in this gene may be associated with susceptibility to hereditary essential tremor 1. Alternative splicing of this gene results in transcript variants encoding different isoforms, although some variants may be subject to nonsense-mediated decay (NMD). [provided by RefSeq, Jul 2008],disease:Genetic variation in DRD3 may be associated with susceptibility to hereditary essential tremor 1 (ETM1) [MIM:190300]. ETM1 is the most common movement disorder. The main feature is postural tremor of the arms. Head, legs, trunk, voice, jaw, and facial muscles also may be involved. The condition can be aggravated by emotions, hunger, fatigue and temperature extremes, and may cause a functional disability or even incapacitation. Inheritance is autosomal dominant.,function:This is one of the five types (D1 to D5) of receptors for dopamine. The activity of this receptor is mediated by G proteins which inhibit adenylyl cyclase.,online information:The Singapore human mutation and polymorphism database,similarity:Belongs to the G-protein coupled receptor 1 family.,subunit:Interacts with CLIC6.,tissue specificity:Brain.,

Research Area

Neuroactive ligand-receptor interaction;

Image Data



Western Blot analysis of HeLa cells using D3DR Polyclonal Antibody.. Secondary antibody was diluted at 1:20000