

Product Name: Cytochrome b5 Rabbit Polyclonal Antibody**Catalog #: APRab09706**

For research use only.

Summary

Description	Rabbit polyclonal Antibody
Host	Rabbit
Application	WB,IHC,ICC/IF,ELISA
Reactivity	Human,Mouse,Rat
Conjugation	Unconjugated
Modification	Unmodified
Isotype	IgG
Clonality	Polyclonal
Form	Liquid
Concentration	1mg/ml
Storage	Aliquot and store at -20°C (valid for 12 months). Avoid freeze/thaw cycles.
Shipping	Ice bags
Buffer	Liquid in PBS containing 50% glycerol, 0.5% protective protein and 0.02% New type preservative N.
Purification	Affinity purification

Application

Dilution Ratio	WB 1:500-1:2000,IHC 1:100-1:300,ICC/IF 1:200-1:1000,ELISA 1:5000-1:10000
Molecular Weight	15kDa

Antigen Information

Gene Name	CYB5A
Alternative Names	CYB5A; CYB5; Cytochrome b5; Microsomal cytochrome b5 type A; MCB5
Gene ID	1528.0
SwissProt ID	P00167
Immunogen	The antiserum was produced against synthesized peptide derived from human CYB5. AA range:61-110

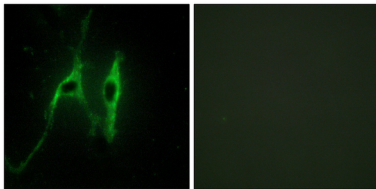
Background

The protein encoded by this gene is a membrane-bound cytochrome that reduces ferric hemoglobin (methemoglobin) to

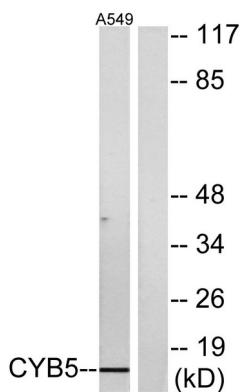
ferrous hemoglobin, which is required for stearyl-CoA-desaturase activity. Defects in this gene are a cause of type IV hereditary methemoglobinemia. Three transcript variants encoding different isoforms have been found for this gene. [provided by RefSeq, Jun 2010],disease:Defects in CYB5A are the cause of type IV hereditary methemoglobinemia [MIM:250790],function:Cytochrome b5 is a membrane bound hemoprotein which function as an electron carrier for several membrane bound oxygenases.,similarity:Belongs to the cytochrome b5 family.,similarity:Contains 1 cytochrome b5 heme-binding domain.,

Research Area

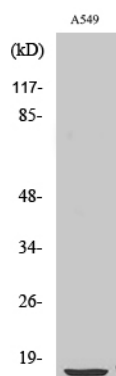
Image Data



Immunofluorescence analysis of NIH/3T3 cells, using CYB5 Antibody. The picture on the right is blocked with the synthesized peptide.



Western blot analysis of lysates from A549 cells, using CYB5 Antibody. The lane on the right is blocked with the synthesized peptide.



Western Blot analysis of various cells using Cytochrome b5 Polyclonal Antibody