
Product Name: CYTL1 Rabbit Polyclonal Antibody**Catalog #: APRab09704**

For research use only.

Summary

Description	Rabbit polyclonal Antibody
Host	Rabbit
Application	WB,IHC,ICC/IF,ELISA
Reactivity	Human,Rat,Mouse
Conjugation	Unconjugated
Modification	Unmodified
Isotype	IgG
Clonality	Polyclonal
Form	Liquid
Concentration	1mg/ml
Storage	Aliquot and store at -20°C (valid for 12 months). Avoid freeze/thaw cycles.
Shipping	Ice bags
Buffer	Liquid in PBS containing 50% glycerol, 0.5% protective protein and 0.02% New type preservative N.
Purification	Affinity purification

Application

Dilution Ratio	WB 1:500-1:2000,IHC 1:100-1:300,ICC/IF 1:50-1:200,ELISA 1:20000-1:40000
Molecular Weight	16kDa

Antigen Information

Gene Name	CYTL1
Alternative Names	CYTL1; C4orf4; Cytokine-like protein 1; Protein C17
Gene ID	54360.0
SwissProt ID	Q9NRR1
Immunogen	The antiserum was produced against synthesized peptide derived from human CYTL1. AA range:61-110

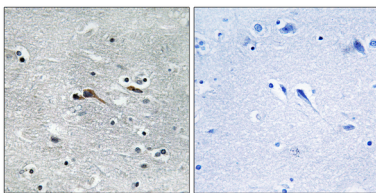
Background

C17 is a cytokine-like protein specifically expressed in bone marrow and cord blood mononuclear cells that bear the CD34

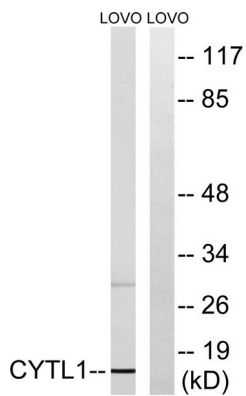
(MIM 142230) surface marker (Liu et al., 2000 [PubMed 10857752]).[supplied by OMIM, Mar 2008],tissue specificity:Specifically expressed in CD34+ hematopoietic cells.,

Research Area

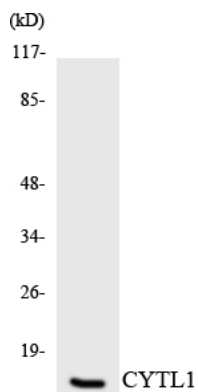
Image Data



Immunohistochemistry analysis of paraffin-embedded human brain tissue, using CYTL1 Antibody. The picture on the right is blocked with the synthesized peptide.



Western blot analysis of lysates from LOVO cells, using CYTL1 Antibody. The lane on the right is blocked with the synthesized peptide.



Western blot analysis of the lysates from HT-29 cells using CYTL1 antibody.