
Product Name: Cystatin SA Rabbit Polyclonal Antibody**Catalog #: APRab09699**

For research use only.

Summary

Description	Rabbit polyclonal Antibody
Host	Rabbit
Application	IHC, ICC/IF, ELISA
Reactivity	Human, Rat, Mouse
Conjugation	Unconjugated
Modification	Unmodified
Isotype	IgG
Clonality	Polyclonal
Form	Liquid
Concentration	1mg/ml
Storage	Aliquot and store at -20°C (valid for 12 months). Avoid freeze/thaw cycles.
Shipping	Ice bags
Buffer	Liquid in PBS containing 50% glycerol, 0.5% protective protein and 0.02% New type preservative N.
Purification	Affinity purification

Application

Dilution Ratio IHC 1:100-1:300, ICC/IF 1:50-1:200, ELISA 1:20000-1:40000

Molecular Weight

Antigen Information

Gene Name	CST2
Alternative Names	CST2; Cystatin-SA; Cystatin-2; Cystatin-S5
Gene ID	1470.0
SwissProt ID	P09228
Immunogen	The antiserum was produced against synthesized peptide derived from human CST2. AA range:11-60

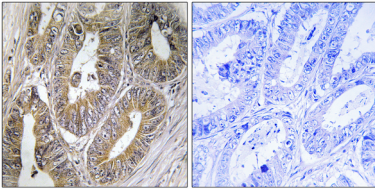
Background

The cystatin superfamily encompasses proteins that contain multiple cystatin-like sequences. Some of the members are active

cysteine protease inhibitors, while others have lost or perhaps never acquired this inhibitory activity. There are three inhibitory families in the superfamily, including the type 1 cystatins (stefins), type 2 cystatins and the kininogens. The type 2 cystatin proteins are a class of cysteine proteinase inhibitors found in a variety of human fluids and secretions, where they appear to provide protective functions. The cystatin locus on chromosome 20 contains the majority of the type 2 cystatin genes and pseudogenes. This gene is located in the cystatin locus and encodes a secreted thiol protease inhibitor found at high levels in saliva, tears and seminal plasma. [provided by RefSeq, Jul 2008],function:Thiol protease inhibitor.,similarity:Belongs to the cystatin family.,tissue specificity:Only expressed in submandibular gland and parotid gland.,

Research Area

Image Data



Immunohistochemistry analysis of paraffin-embedded human colon carcinoma, using CST2 Antibody. The picture on the right is blocked with the synthesized peptide.