

---

**Product Name: Cystatin A Rabbit Polyclonal Antibody****Catalog #: APRab09690**

For research use only.

**Summary**

<b>Description</b>	Rabbit polyclonal Antibody
<b>Host</b>	Rabbit
<b>Application</b>	WB,IHC,ICC/IF,ELISA
<b>Reactivity</b>	Human,Rat,Mouse
<b>Conjugation</b>	Unconjugated
<b>Modification</b>	Unmodified
<b>Isotype</b>	IgG
<b>Clonality</b>	Polyclonal
<b>Form</b>	Liquid
<b>Concentration</b>	1mg/ml
<b>Storage</b>	Aliquot and store at -20°C (valid for 12 months). Avoid freeze/thaw cycles.
<b>Shipping</b>	Ice bags
<b>Buffer</b>	Liquid in PBS containing 50% glycerol, 0.5% protective protein and 0.02% New type preservative N.
<b>Purification</b>	Affinity purification

**Application**

<b>Dilution Ratio</b>	WB 1:500-1:2000,IHC 1:100-1:300,ICC/IF 1:200-1:1000,ELISA 1:5000-1:10000
<b>Molecular Weight</b>	11kDa

**Antigen Information**

<b>Gene Name</b>	CSTA
<b>Alternative Names</b>	CSTA; STF1; STFA; Cystatin-A; Cystatin-AS; Stefin-A
<b>Gene ID</b>	1475.0
<b>SwissProt ID</b>	P01040
<b>Immunogen</b>	The antiserum was produced against synthesized peptide derived from human Stefin A. AA range:49-98

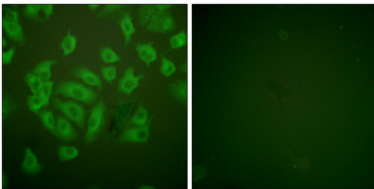
**Background**

The cystatin superfamily encompasses proteins that contain multiple cystatin-like sequences. Some of the members are active

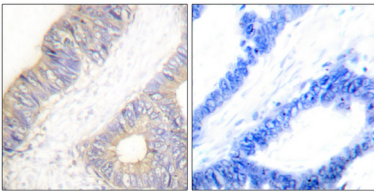
cysteine protease inhibitors, while others have lost or perhaps never acquired this inhibitory activity. There are three inhibitory families in the superfamily, including the type 1 cystatins (stefins), type 2 cystatins, and kininogens. This gene encodes a stefin that functions as a cysteine protease inhibitor, forming tight complexes with papain and the cathepsins B, H, and L. The protein is one of the precursor proteins of cornified cell envelope in keratinocytes and plays a role in epidermal development and maintenance. Stefins have been proposed as prognostic and diagnostic tools for cancer. [provided by RefSeq, Jul 2008],function:This is an intracellular thiol proteinase inhibitor.,similarity:Belongs to the cystatin family.,

## Research Area

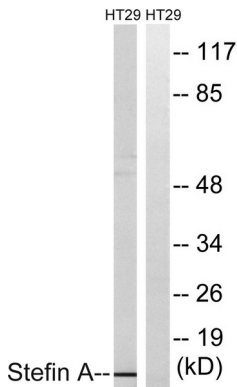
### Image Data



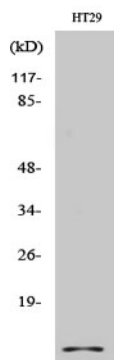
Immunofluorescence analysis of A549 cells, using Stefin A Antibody. The picture on the right is blocked with the synthesized peptide.



Immunohistochemistry analysis of paraffin-embedded human colon carcinoma tissue, using Stefin A Antibody. The picture on the right is blocked with the synthesized peptide.



Western blot analysis of lysates from HT29 cells, using Stefin A Antibody. The lane on the right is blocked with the synthesized peptide.



Western Blot analysis of various cells using Cystatin A Polyclonal Antibody



Western Blot analysis of HT29 cells using Cystatin A Polyclonal Antibody