

---

**Product Name: Cystatin 11 Rabbit Polyclonal Antibody****Catalog #: APRab09688**

For research use only.

**Summary**

<b>Description</b>	Rabbit polyclonal Antibody
<b>Host</b>	Rabbit
<b>Application</b>	WB,ELISA
<b>Reactivity</b>	Human,Rat,Mouse
<b>Conjugation</b>	Unconjugated
<b>Modification</b>	Unmodified
<b>Isotype</b>	IgG
<b>Clonality</b>	Polyclonal
<b>Form</b>	Liquid
<b>Concentration</b>	1mg/ml
<b>Storage</b>	Aliquot and store at -20°C (valid for 12 months). Avoid freeze/thaw cycles.
<b>Shipping</b>	Ice bags
<b>Buffer</b>	Liquid in PBS containing 50% glycerol, 0.5% protective protein and 0.02% New type preservative N.
<b>Purification</b>	Affinity purification

**Application**

<b>Dilution Ratio</b>	WB 1:500-1:2000,ELISA 1:20000-1:40000
<b>Molecular Weight</b>	17kDa

**Antigen Information**

<b>Gene Name</b>	CST11
<b>Alternative Names</b>	CST11; CST8L; Cystatin-11
<b>Gene ID</b>	140880.0
<b>SwissProt ID</b>	Q9H112
<b>Immunogen</b>	The antiserum was produced against synthesized peptide derived from human CST11. AA range:81-130

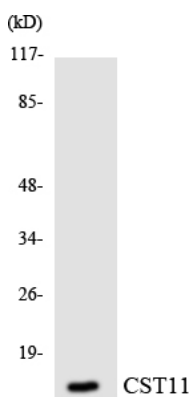
**Background**

The cystatin superfamily encompasses proteins that contain multiple cystatin-like sequences. Some of the members are active

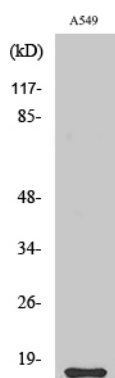
cysteine protease inhibitors, while others have lost or perhaps never acquired this inhibitory activity. There are three inhibitory families in the superfamily, including the type 1 cystatins (stefins), type 2 cystatins and the kininogens. The type 2 cystatin proteins are a class of cysteine proteinase inhibitors found in a variety of human fluids and secretions. The cystatin locus on chromosome 20 contains the majority of the type 2 cystatin genes and pseudogenes. This gene is located in the cystatin locus and encodes an epididymal-specific protein shown to have antimicrobial activity against E. coli. Alternative splicing yields two variants encoding distinct isoforms. [provided by RefSeq, Sep 2014],function:Has antibacterial activity against the Gram-negative bacteria E.coli. May play a role in sperm maturation and fertilization.,similarity:Belongs to the cystatin family.,subcellular location:Nuclear and cytoplasmic in the epididymis. Localized to the postacrosomal and tail regions of sperm. Probably localized to the outer surface of sperm.,tissue specificity:Detected in the epithelium and lumen of the epididymis, and in sperm (at protein level),,

## Research Area

### Image Data



Western blot analysis of the lysates from Jurkat cells using CST11 antibody.



Western Blot analysis of various cells using Cystatin 11 Polyclonal Antibody