
Product Name: CysLTR2 Rabbit Polyclonal Antibody**Catalog #: APRab09686**

For research use only.

Summary

Description	Rabbit polyclonal Antibody
Host	Rabbit
Application	WB,ICC/IF,ELISA
Reactivity	Human,Rat,Mouse
Conjugation	Unconjugated
Modification	Unmodified
Isotype	IgG
Clonality	Polyclonal
Form	Liquid
Concentration	1mg/ml
Storage	Aliquot and store at -20°C (valid for 12 months). Avoid freeze/thaw cycles.
Shipping	Ice bags
Buffer	Liquid in PBS containing 50% glycerol, 0.5% protective protein and 0.02% New type preservative N.
Purification	Affinity purification

Application

Dilution Ratio	WB 1:500-1:2000,ICC/IF 1:200-1:1000,ELISA 1:20000-1:40000
Molecular Weight	35kDa

Antigen Information

Gene Name	CYSLTR2
Alternative Names	CYSLTR2; CYSLT2; CYSLT2R; PSEC0146; Cysteinyl leukotriene receptor 2; CysLTR2; G-protein coupled receptor GPCR21; hGPCR21; G-protein coupled receptor HG57; HPN321
Gene ID	57105.0
SwissProt ID	Q9NS75
Immunogen	The antiserum was produced against synthesized peptide derived from human CLTR2. AA range:281-330

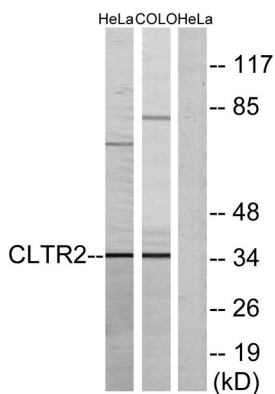
Background

The cysteinyl leukotrienes LTC₄, LTD₄, and LTE₄ are important mediators of human bronchial asthma. Pharmacologic studies have determined that cysteinyl leukotrienes activate at least 2 receptors, the protein encoded by this gene and CYSLTR1. This encoded receptor is a member of the superfamily of G protein-coupled receptors. It seems to play a major role in endocrine and cardiovascular systems. [provided by RefSeq, Jul 2008],function:Receptor for cysteinyl leukotrienes. The response is mediated via a G-protein that activates a phosphatidylinositol-calcium second messenger system. Stimulation by BAY u9773, a partial agonist, induces specific contractions of pulmonary veins and might also have an indirect role in the relaxation of the pulmonary vascular endothelium. The rank order of affinities for the leukotrienes is LTC₄ = LTD₄ >> LTE₄.,similarity:Belongs to the G-protein coupled receptor 1 family.,tissue specificity:Widely expressed, with highest levels in the heart, placenta, spleen, peripheral blood leukocytes and adrenal gland. In lung, expressed in the interstitial macrophages, and slightly in smooth muscle cells.,

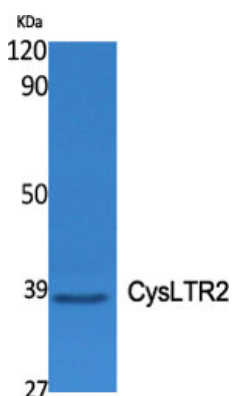
Research Area

Calcium;Neuroactive ligand-receptor interaction;

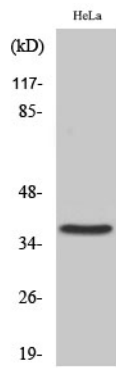
Image Data



Western blot analysis of lysates from HeLa and COLO cells, using CLTR2 Antibody. The lane on the right is blocked with the synthesized peptide.



Western Blot analysis of various cells using CysLTR2 Polyclonal Antibody



Western Blot analysis of HeLa cells using CysLTR2 Polyclonal Antibody