
Product Name: CysLTR1 Rabbit Polyclonal Antibody**Catalog #: APRab09683**

For research use only.

Summary

Description	Rabbit polyclonal Antibody
Host	Rabbit
Application	WB,ICC/IF,ELISA
Reactivity	Human,Rat,Mouse
Conjugation	Unconjugated
Modification	Unmodified
Isotype	IgG
Clonality	Polyclonal
Form	Liquid
Concentration	1mg/ml
Storage	Aliquot and store at -20°C (valid for 12 months). Avoid freeze/thaw cycles.
Shipping	Ice bags
Buffer	Liquid in PBS containing 50% glycerol, 0.5% protective protein and 0.02% New type preservative N.
Purification	Affinity purification

Application

Dilution Ratio	WB 1:500-1:2000,ICC/IF 1:200-1:1000,ELISA 1:5000-1:10000
Molecular Weight	38kDa

Antigen Information

Gene Name	CYSLTR1
Alternative Names	CYSLTR1; CYSLT1; Cysteinyl leukotriene receptor 1; CysLTR1; Cysteinyl leukotriene D4 receptor; LTD4 receptor; G-protein coupled receptor HG55; HMTMF81
Gene ID	10800.0
SwissProt ID	Q9Y271
Immunogen	The antiserum was produced against synthesized peptide derived from human CYSLTR1. AA range:131-180

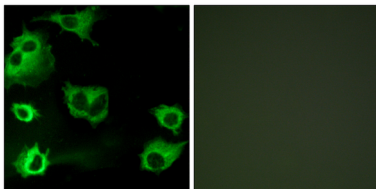
Background

This gene encodes a member of the G-protein coupled receptor 1 family. The encoded protein is a receptor for cysteinyl leukotrienes, and is involved in mediating bronchoconstriction via activation of a phosphatidylinositol-calcium second messenger system. Activation of the encoded receptor results in contraction and proliferation of bronchial smooth muscle cells, eosinophil migration, and damage to the mucus layer in the lung. Upregulation of this gene is associated with asthma and dysregulation may also be implicated in cancer. Alternative splicing results in multiple transcript variants. [provided by RefSeq, Aug 2013],function:Receptor for cysteinyl leukotrienes mediating bronchoconstriction of individuals with and without asthma. Stimulation by LTD4 results in the contraction and proliferation of smooth muscle, edema, eosinophil migration and damage to the mucus layer in the lung. This response is mediated via a G-protein that activates a phosphatidylinositol-calcium second messenger system. The rank order of affinities for the leukotrienes is LTD4 >> LTE4 = LTC4 >> LTB4.,miscellaneous:Selective antagonists, such as montelukast (Singulair), zafirlukast (Accolate) and pranlukast (Onon), are used in the treatment of the asthma crisis.,similarity:Belongs to the G-protein coupled receptor 1 family.,tissue specificity:Widely expressed, with highest levels in spleen and peripheral blood leukocytes. Lower expression in several tissues, such as lung (mostly in smooth muscle bundles and alveolar macrophages), placenta, small intestine, pancreas, colon and heart.,

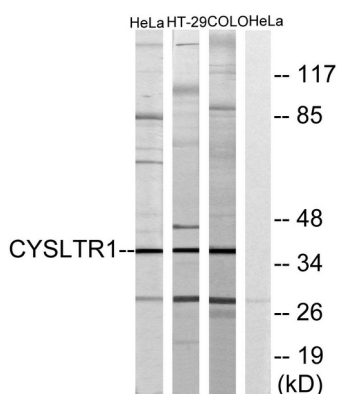
Research Area

Calcium;Neuroactive ligand-receptor interaction;

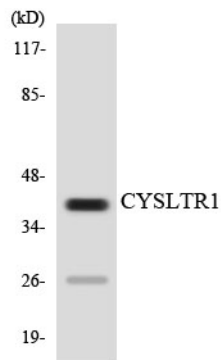
Image Data



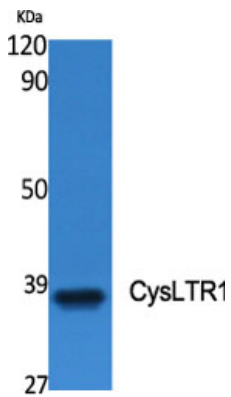
Immunofluorescence analysis of COS7 cells, using CYSLTR1 Antibody. The picture on the right is blocked with the synthesized peptide.



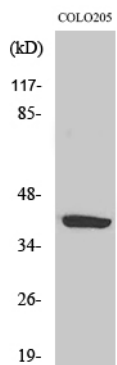
Western blot analysis of lysates from COLO205, HT-29, and HeLa cells, using CYSLTR1 Antibody. The lane on the right is blocked with the synthesized peptide.



Western blot analysis of the lysates from HT-29 cells using CYSLTR1 antibody.



Western Blot analysis of various cells using CysLTR1 Polyclonal Antibody



Western Blot analysis of HeLa cells using CysLTR1 Polyclonal Antibody