

---

**Product Name: CYP4F11 Rabbit Polyclonal Antibody****Catalog #: APRab09671**

For research use only.

**Summary**

<b>Description</b>	Rabbit polyclonal Antibody
<b>Host</b>	Rabbit
<b>Application</b>	WB,ELISA
<b>Reactivity</b>	Human,Rat,Mouse
<b>Conjugation</b>	Unconjugated
<b>Modification</b>	Unmodified
<b>Isotype</b>	IgG
<b>Clonality</b>	Polyclonal
<b>Form</b>	Liquid
<b>Concentration</b>	1mg/ml
<b>Storage</b>	Aliquot and store at -20°C (valid for 12 months). Avoid freeze/thaw cycles.
<b>Shipping</b>	Ice bags
<b>Buffer</b>	Liquid in PBS containing 50% glycerol, 0.5% protective protein and 0.02% New type preservative N.
<b>Purification</b>	Affinity purification

**Application**

<b>Dilution Ratio</b>	WB 1:500-1:2000,ELISA 1:5000-1:10000
<b>Molecular Weight</b>	60kDa

**Antigen Information**

<b>Gene Name</b>	CYP4F11
<b>Alternative Names</b>	CYP4F11; Cytochrome P450 4F11; CYP11B1
<b>Gene ID</b>	57834.0
<b>SwissProt ID</b>	Q9HBI6
<b>Immunogen</b>	The antiserum was produced against synthesized peptide derived from human Cytochrome P450 4F11. AA range:341-390

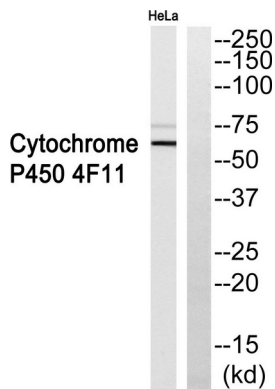
**Background**

cytochrome P450 family 4 subfamily F member 11(CYP4F11) Homo sapiens This gene, CYP4F11, encodes a member of the

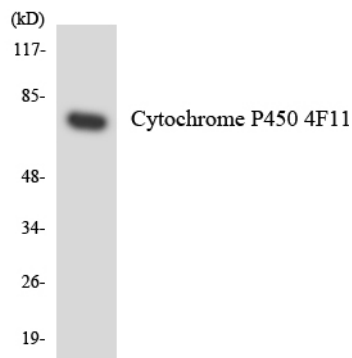
cytochrome P450 superfamily of enzymes. The cytochrome P450 proteins are monooxygenases which catalyze many reactions involved in drug metabolism and synthesis of cholesterol, steroids and other lipids. This gene is part of a cluster of cytochrome P450 genes on chromosome 19. Another member of this family, CYP4F2, is approximately 16 kb away. Alternatively spliced transcript variants encoding the same protein have been found for this gene. [provided by RefSeq, Jul 2008],catalytic activity:RH + reduced flavoprotein + O(2) = ROH + oxidized flavoprotein + H(2)O.,cofactor:Heme group.,similarity:Belongs to the cytochrome P450 family.,tissue specificity:Expressed mainly in human liver, followed by kidney, heart, and skeletal muscle.,

## Research Area

## Image Data



Western blot analysis of Cytochrome P450 4F11 Antibody. The lane on the right is blocked with the Cytochrome P450 4F11 peptide.



Western blot analysis of the lysates from COLO205 cells using Cytochrome P450 4F11 antibody.