

Product Name: CYP4B1 Rabbit Polyclonal Antibody**Catalog #: APRab09670**

For research use only.

Summary

Description	Rabbit polyclonal Antibody
Host	Rabbit
Application	WB,IHC,ICC/IF,ELISA
Reactivity	Human,Rat,Mouse
Conjugation	Unconjugated
Modification	Unmodified
Isotype	IgG
Clonality	Polyclonal
Form	Liquid
Concentration	1mg/ml
Storage	Aliquot and store at -20°C (valid for 12 months). Avoid freeze/thaw cycles.
Shipping	Ice bags
Buffer	Liquid in PBS containing 50% glycerol, 0.5% protective protein and 0.02% New type preservative N.
Purification	Affinity purification

Application

Dilution Ratio	WB 1:500-1:2000,IHC 1:100-1:300,ICC/IF 1:50-1:200,ELISA 1:20000-1:40000
Molecular Weight	50kDa

Antigen Information

Gene Name	CYP4B1
Alternative Names	CYP4B1; Cytochrome P450 4B1; CYP4B1; Cytochrome P450-HP
Gene ID	1580.0
SwissProt ID	P13584
Immunogen	The antiserum was produced against synthesized peptide derived from human Cytochrome P450 4B1. AA range:141-190

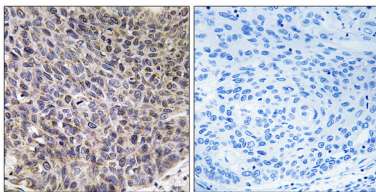
Background

This gene encodes a member of the cytochrome P450 superfamily of enzymes. The cytochrome P450 proteins are

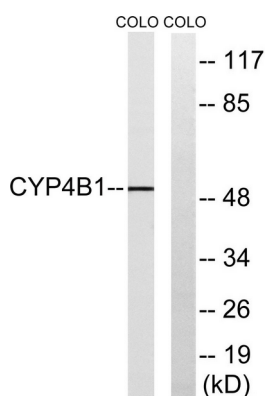
monooxygenases which catalyze many reactions involved in drug metabolism and synthesis of cholesterol, steroids and other lipids. This protein localizes to the endoplasmic reticulum. In rodents, the homologous protein has been shown to metabolize certain carcinogens; however, the specific function of the human protein has not been determined. Multiple transcript variants have been found for this gene. [provided by RefSeq, Jan 2016],catalytic activity:RH + reduced flavoprotein + O(2) = ROH + oxidized flavoprotein + H(2)O.,cofactor:Heme group.,function:Cytochromes P450 are a group of heme-thiolate monooxygenases. In liver microsomes, this enzyme is involved in an NADPH-dependent electron transport pathway. It oxidizes a variety of structurally unrelated compounds, including steroids, fatty acids, and xenobiotics.,induction:P450 can be induced to high levels in liver and other tissues by various foreign compounds, including drugs, pesticides, and carcinogens.,online information:CYP4B1 alleles,similarity:Belongs to the cytochrome P450 family.,

Research Area

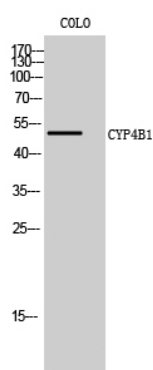
Image Data



Immunohistochemistry analysis of paraffin-embedded human lung carcinoma tissue, using Cytochrome P450 4B1 Antibody. The picture on the right is blocked with the synthesized peptide.



Western blot analysis of lysates from COLO cells, using Cytochrome P450 4B1 Antibody. The lane on the right is blocked with the synthesized peptide.



Western Blot analysis of COLO cells using CYP4B1 Polyclonal Antibody