
Product Name: CYP3A43 Rabbit Polyclonal Antibody**Catalog #: APRab09667**

For research use only.

Summary

Description	Rabbit polyclonal Antibody
Host	Rabbit
Application	WB,IHC,ICC/IF,ELISA
Reactivity	Human,Rat,Mouse
Conjugation	Unconjugated
Modification	Unmodified
Isotype	IgG
Clonality	Polyclonal
Form	Liquid
Concentration	1mg/ml
Storage	Aliquot and store at -20°C (valid for 12 months). Avoid freeze/thaw cycles.
Shipping	Ice bags
Buffer	Liquid in PBS containing 50% glycerol, 0.5% protective protein and 0.02% New type preservative N.
Purification	Affinity purification

Application

Dilution Ratio	WB 1:500-1:2000,IHC 1:100-1:300,ICC/IF 1:50-1:200,ELISA 1:10000-1:20000
Molecular Weight	57kDa

Antigen Information

Gene Name	CYP3A43
Alternative Names	CYP3A43; Cytochrome P450 3A43
Gene ID	64816.0
SwissProt ID	Q9HB55
Immunogen	The antiserum was produced against synthesized peptide derived from human Cytochrome P450 3A43. AA range:231-280

Background

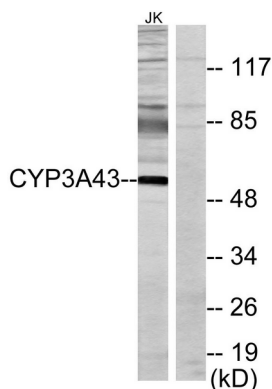
cytochrome P450 family 3 subfamily A member 43(CYP3A43) Homo sapiens This gene encodes a member of the cytochrome

P450 superfamily of enzymes. The cytochrome P450 proteins are monooxygenases which catalyze many reactions involved in drug metabolism and synthesis of cholesterol, steroids and other lipids. The encoded protein has a low level of testosterone hydroxylase activity, and may play a role in aging mechanisms and cancer progression. This gene is part of a cluster of cytochrome P450 genes on chromosome 7q21.1. Alternate splicing results in multiple transcript variants encoding different isoforms. [provided by RefSeq, Jul 2013],alternative products:Additional isoforms seem to exist,catalytic activity:RH + reduced flavoprotein + O(2) = ROH + oxidized flavoprotein + H(2)O.,cofactor:Heme group.,function:Exhibits low testosterone 6-beta-hydroxylase activity.,induction:By rifampicin.,online information:CYP3A43 alleles,polymorphism:At protein level, three alleles are known: CYP3A43*1, CYP3A43*2 and CYP3A43*3. The sequence shown is that of CYP3A43*1, which is the most frequent allele. The allele CYP3A43*2 is likely to be non-functional.,similarity:Belongs to the cytochrome P450 family.,tissue specificity:Highest expression level in prostate. Also expressed in liver, kidney, pancreas, fetal liver and fetal skeletal muscle.,

Research Area

Steroid hormone biosynthesis;Linoleic acid metabolism;Retinol metabolism;Metabolism of xenobiotics by cytochrome P450;Drug metabolism;Drug metabolism;

Image Data



Western blot analysis of lysates from Jurkat cells, using Cytochrome P450 3A43 Antibody. The lane on the right is blocked with the synthesized peptide.