
Product Name: CYP2U1 Rabbit Polyclonal Antibody**Catalog #: APRab09661**

For research use only.

Summary

Description	Rabbit polyclonal Antibody
Host	Rabbit
Application	WB,IHC,ICC/IF,ELISA
Reactivity	Human,Mouse,Rat
Conjugation	Unconjugated
Modification	Unmodified
Isotype	IgG
Clonality	Polyclonal
Form	Liquid
Concentration	1mg/ml
Storage	Aliquot and store at -20°C (valid for 12 months). Avoid freeze/thaw cycles.
Shipping	Ice bags
Buffer	Liquid in PBS containing 50% glycerol, 0.5% protective protein and 0.02% New type preservative N.
Purification	Affinity purification

Application

Dilution Ratio	WB 1:500-1:2000,IHC 1:100-1:300,ICC/IF 1:200-1:1000,ELISA 1:10000-1:20000
Molecular Weight	61kDa

Antigen Information

Gene Name	CYP2U1
Alternative Names	CYP2U1; Cytochrome P450 2U1
Gene ID	113612.0
SwissProt ID	Q7Z449
Immunogen	The antiserum was produced against synthesized peptide derived from human Cytochrome P450 2U1. AA range:281-330

Background

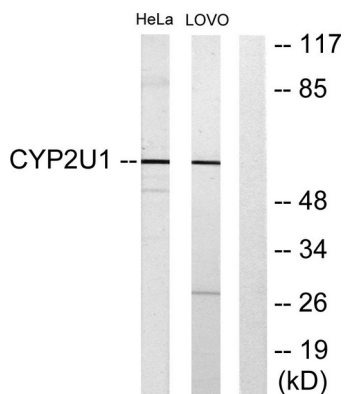
This gene encodes a member of the cytochrome P450 superfamily of enzymes. The cytochrome P450 proteins are

monooxygenases which catalyze many reactions involved in drug metabolism and synthesis of cholesterol, steroids and other lipids. This enzyme is a hydroxylase that metabolizes arachidonic acid, docosahexaenoic acid, and other long chain fatty acids. [provided by RefSeq, Jul 2008],catalytic activity:RH + reduced flavoprotein + O(2) = ROH + oxidized flavoprotein + H(2)O.,cofactor:Heme group.,developmental stage:Expressed in fetal thymus.,function:Catalyzes the hydroxylation of arachidonic acid, docosahexaenoic acid and other long chain fatty acids. May modulate the arachidonic acid signaling pathway and play a role in other fatty acid signaling processes.,similarity:Belongs to the cytochrome P450 family.,tissue specificity:Widely expressed with stronger expression in thymus, heart and cerebellum.,

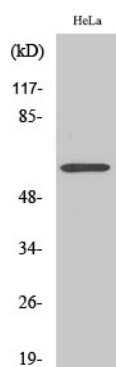
Research Area

Arachidonic acid metabolism;

Image Data



Western blot analysis of lysates from HeLa and LOVO cells, using Cytochrome P450 2U1 Antibody. The lane on the right is blocked with the synthesized peptide.



Western Blot analysis of various cells using CYP2U1 Polyclonal Antibody