

---

**Product Name: CYP2B6 Rabbit Polyclonal Antibody****Catalog #: APRab09651**

For research use only.

**Summary**

<b>Description</b>	Rabbit polyclonal Antibody
<b>Host</b>	Rabbit
<b>Application</b>	WB,IHC,ICC/IF,ELISA
<b>Reactivity</b>	Human
<b>Conjugation</b>	Unconjugated
<b>Modification</b>	Unmodified
<b>Isotype</b>	IgG
<b>Clonality</b>	Polyclonal
<b>Form</b>	Liquid
<b>Concentration</b>	1mg/ml
<b>Storage</b>	Aliquot and store at -20°C (valid for 12 months). Avoid freeze/thaw cycles.
<b>Shipping</b>	Ice bags
<b>Buffer</b>	Liquid in PBS containing 50% glycerol, 0.5% protective protein and 0.02% New type preservative N.
<b>Purification</b>	Affinity purification

**Application**

<b>Dilution Ratio</b>	WB 1:500-1:2000,IHC 1:100-1:300,ICC/IF 1:200-1:1000,ELISA 1:5000-1:10000
<b>Molecular Weight</b>	56kDa

**Antigen Information**

<b>Gene Name</b>	CYP2B6
<b>Alternative Names</b>	CYP2B6; Cytochrome P450 2B6; 1; 4-cineole 2-exo-monooxygenase; CYP11B6; Cytochrome P450 IIB1
<b>Gene ID</b>	1555.0
<b>SwissProt ID</b>	P20813
<b>Immunogen</b>	The antiserum was produced against synthesized peptide derived from human Cytochrome P450 2B6. AA range:241-290

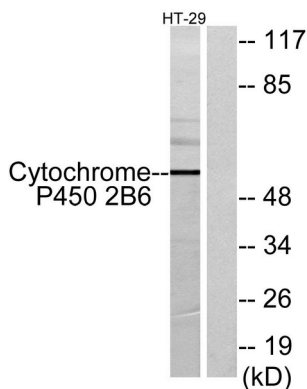
**Background**

This gene, CYP2B6, encodes a member of the cytochrome P450 superfamily of enzymes. The cytochrome P450 proteins are monooxygenases which catalyze many reactions involved in drug metabolism and synthesis of cholesterol, steroids and other lipids. This protein localizes to the endoplasmic reticulum and its expression is induced by phenobarbital. The enzyme is known to metabolize some xenobiotics, such as the anti-cancer drugs cyclophosphamide and ifosphamide. Transcript variants for this gene have been described; however, it has not been resolved whether these transcripts are in fact produced by this gene or by a closely related pseudogene, CYP2B7. Both the gene and the pseudogene are located in the middle of a CYP2A pseudogene found in a large cluster of cytochrome P450 genes from the CYP2A, CYP2B and CYP2F subfamilies on chromosome 19q. [provided by RefSeq, Jul 2008],catalytic activity:RH + reduced flavoprotein + O(2) = ROH + oxidized flavoprotein + H(2)O.,cofactor:Heme group.,function:Cytochromes P450 are a group of heme-thiolate monooxygenases. In liver microsomes, this enzyme is involved in an NADPH-dependent electron transport pathway. It oxidizes a variety of structurally unrelated compounds, including steroids, fatty acids, and xenobiotics.,induction:By phenobarbital.,online information:CYP2B6 alleles,PTM:Phosphorylation is accompanied by a decrease in enzyme activity.,similarity:Belongs to the cytochrome P450 family.,tissue specificity:Expressed in liver, lung and heart right ventricle.,

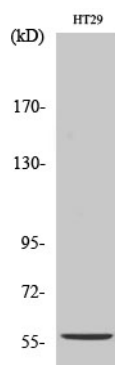
## Research Area

Arachidonic acid metabolism;Retinol metabolism;Metabolism of xenobiotics by cytochrome P450;Drug metabolism;

## Image Data



Western blot analysis of lysates from HT-29 cells, using Cytochrome P450 2B6 Antibody. The lane on the right is blocked with the synthesized peptide.



Western Blot analysis of various cells using CYP2B6 Polyclonal Antibody