
Product Name: Cyclin M2 Rabbit Polyclonal Antibody**Catalog #: APRab09605**

For research use only.

Summary

Description	Rabbit polyclonal Antibody
Host	Rabbit
Application	WB,ELISA
Reactivity	Human,Mouse,Rat
Conjugation	Unconjugated
Modification	Unmodified
Isotype	IgG
Clonality	Polyclonal
Form	Liquid
Concentration	1mg/ml
Storage	Aliquot and store at -20°C (valid for 12 months). Avoid freeze/thaw cycles.
Shipping	Ice bags
Buffer	Liquid in PBS containing 50% glycerol, 0.5% protective protein and 0.02% New type preservative N.
Purification	Affinity purification

Application

Dilution Ratio	WB 1:500-1:2000,ELISA 1:5000-1:20000
Molecular Weight	100kDa

Antigen Information

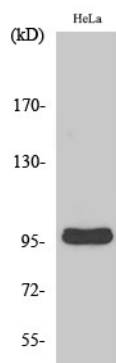
Gene Name	CNNM2
Alternative Names	CNNM2; ACDP2; Metal transporter CNNM2; Ancient conserved domain-containing protein 2; Cyclin-M2
Gene ID	54805.0
SwissProt ID	Q9H8M5
Immunogen	The antiserum was produced against synthesized peptide derived from human CNNM2. AA range:571-620

Background

cyclin and CBS domain divalent metal cation transport mediator 2(CNNM2) Homo sapiens This gene encodes a member of the ancient conserved domain containing protein family. Members of this protein family contain a cyclin box motif and have structural similarity to the cyclins. The encoded protein may play an important role in magnesium homeostasis by mediating the epithelial transport and renal reabsorption of Mg²⁺. Mutations in this gene are associated with renal hypomagnesemia. Alternatively spliced transcript variants encoding multiple isoforms have been observed for this gene. [provided by RefSeq, Dec 2011],function:Divalent metal cation transporter. Mediates transport of divalent metal cations in an order of Mg(2+) > Co(2+) > Mn(2+) > Sr(2+) > Ba(2+) > Cu(2+) > Fe(2+),.miscellaneous:Shares weak sequence similarity with the cyclin family, explaining its name. However it has no cyclin-like function in vivo,.similarity:Belongs to the ACDP family,.similarity:Contains 2 CBS domains,.tissue specificity:Widely expressed. Expressed at higher level in brain, kidney and placenta, while it is weakly expressed in skeletal muscle.,

Research Area

Image Data



Western Blot analysis of various cells using Cyclin M2 Polyclonal Antibody