
Product Name: Cyclin H Rabbit Polyclonal Antibody**Catalog #: APRab09602**

For research use only.

Summary

Description	Rabbit polyclonal Antibody
Host	Rabbit
Application	WB,IHC,ICC/IF,ELISA
Reactivity	Human,Mouse,Rat
Conjugation	Unconjugated
Modification	Unmodified
Isotype	IgG
Clonality	Polyclonal
Form	Liquid
Concentration	1mg/ml
Storage	Aliquot and store at -20°C (valid for 12 months). Avoid freeze/thaw cycles.
Shipping	Ice bags
Buffer	Liquid in PBS containing 50% glycerol, 0.5% protective protein and 0.02% New type preservative N.
Purification	Affinity purification

Application

Dilution Ratio	WB 1:500-1:2000,IHC 1:100-1:300,ICC/IF 1:200-1:1000,ELISA 1:10000-1:20000
Molecular Weight	38kDa

Antigen Information

Gene Name	CCNH
Alternative Names	CCNH; Cyclin-H; MO15-associated protein; p34; p37
Gene ID	902.0
SwissProt ID	P51946
Immunogen	The antiserum was produced against synthesized peptide derived from human Cyclin H. AA range:274-323

Background

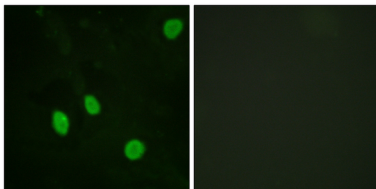
The protein encoded by this gene belongs to the highly conserved cyclin family, whose members are characterized by a

dramatic periodicity in protein abundance through the cell cycle. Cyclins function as regulators of CDK kinases. Different cyclins exhibit distinct expression and degradation patterns which contribute to the temporal coordination of each mitotic event. This cyclin forms a complex with CDK7 kinase and ring finger protein MAT1. The kinase complex is able to phosphorylate CDK2 and CDC2 kinases, thus functions as a CDK-activating kinase (CAK). This cyclin and its kinase partner are components of TFIIH, as well as RNA polymerase II protein complexes. They participate in two different transcriptional regulation processes, suggesting an important link between basal transcription control and the cell cycle machinery. A pseudogene of this gene is found on chromosome 4. Alternate splicing results in multiple function:Regulates CDK7, the catalytic subunit of the CDK-activating kinase (CAK) enzymatic complex. CAK activates the cyclin-associated kinases CDC2/CDK1, CDK2, CDK4 and CDK6 by threonine phosphorylation. CAK complexed to the core-TFIIH basal transcription factor activates RNA polymerase II by serine phosphorylation of the repetitive C-terminus domain (CTD) of its large subunit (POLR2A), allowing its escape from the promoter and elongation of the transcripts. Involved in cell cycle control and in RNA transcription by RNA polymerase II. Its expression and activity are constant throughout the cell cycle.,similarity:Belongs to the cyclin family.,similarity:Belongs to the cyclin family. Cyclin C subfamily.,subunit:Associates primarily with CDK7 and MAT1 to form the CAK complex. CAK can further associate with the core-TFIIH to form the TFIIH basal transcription factor.,

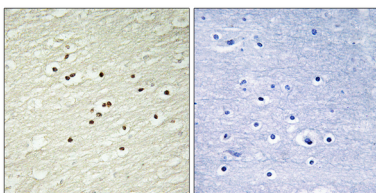
Research Area

Nucleotide excision repair;Cell_Cycle_G1S;Cell_Cycle_G2M_DNA;

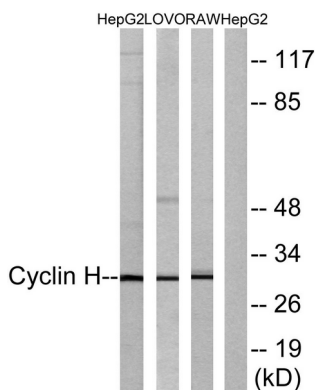
Image Data



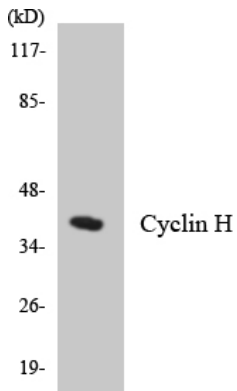
Immunofluorescence analysis of HeLa cells, using Cyclin H Antibody. The picture on the right is blocked with the synthesized peptide.



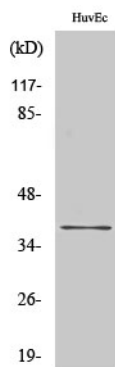
Immunohistochemistry analysis of paraffin-embedded human brain tissue, using Cyclin H Antibody. The picture on the right is blocked with the synthesized peptide.



Western blot analysis of lysates from HepG2, LOVO, and RAW264.7 cells, using Cyclin H Antibody. The lane on the right is blocked with the synthesized peptide.



Western blot analysis of the lysates from HepG2 cells using Cyclin H antibody.



Western Blot analysis of various cells using Cyclin H Polyclonal Antibody.