

Product Name: Cyclin F Rabbit Polyclonal Antibody**Catalog #: APRab09599**

For research use only.

Summary

Description	Rabbit polyclonal Antibody
Host	Rabbit
Application	WB,IHC,ICC/IF,ELISA
Reactivity	Human,Rat,Mouse
Conjugation	Unconjugated
Modification	Unmodified
Isotype	IgG
Clonality	Polyclonal
Form	Liquid
Concentration	1mg/ml
Storage	Aliquot and store at -20°C (valid for 12 months). Avoid freeze/thaw cycles.
Shipping	Ice bags
Buffer	Liquid in PBS containing 50% glycerol, 0.5% protective protein and 0.02% New type preservative N.
Purification	Affinity purification

Application

Dilution Ratio	WB 1:500-1:2000,IHC 1:100-1:300,ICC/IF 1:50-1:200,ELISA 1:5000-1:20000
Molecular Weight	88kDa

Antigen Information

Gene Name	CCNF
Alternative Names	CCNF; FBX1; FBXO1; Cyclin-F; F-box only protein 1
Gene ID	899.0
SwissProt ID	P41002
Immunogen	The antiserum was produced against synthesized peptide derived from human Cyclin F. AA range:737-786

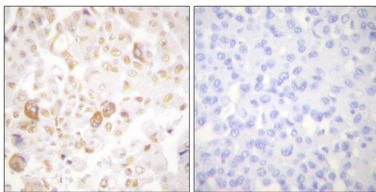
Background

This gene encodes a member of the cyclin family. Cyclins are important regulators of cell cycle transitions through their ability

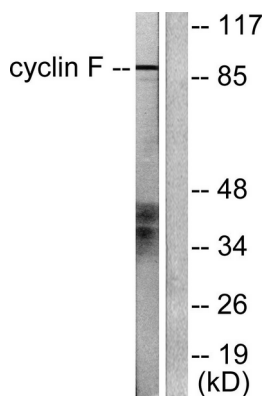
to bind and activate cyclin-dependent protein kinases. This member also belongs to the F-box protein family which is characterized by an approximately 40 amino acid motif, the F-box. The F-box proteins constitute one of the four subunits of the ubiquitin protein ligase complex called SCFs (SKP1-cullin-F-box), which function in phosphorylation-dependent ubiquitination. The F-box proteins are divided into 3 classes: Fbws containing WD-40 domains, Fbls containing leucine-rich repeats, and Fbxs containing either different protein-protein interaction modules or no recognizable motifs. The protein encoded by this gene belongs to the Fbxs class and it was one of the first proteins in which the F-box motif was identified. [provided by RefSeq, Jul 2008],developmental stage:G2/M cyclins accumulate steadily during G2 and are abruptly destroyed at mitosis.,function:Likely to be involved in the control of the cell cycle during S phase and G2.,similarity:Belongs to the cyclin family.,similarity:Belongs to the cyclin family. Cyclin AB subfamily.,similarity:Contains 1 F-box domain.,

Research Area

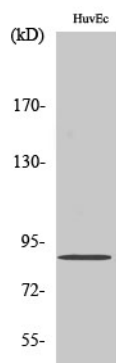
Image Data



Immunohistochemistry analysis of paraffin-embedded human breast carcinoma tissue, using Cyclin F Antibody. The picture on the right is blocked with the synthesized peptide.



Western blot analysis of lysates from HeLa cells, using Cyclin F Antibody. The lane on the right is blocked with the synthesized peptide.



Western Blot analysis of various cells using Cyclin F Polyclonal Antibody diluted at 1 : 500 cells nucleus extracted by Minute TM Cytoplasmic and Nuclear Fractionation kit (SC-003, Invent biotech, MN, USA) .