

---

**Product Name: CYB5R1 Rabbit Polyclonal Antibody****Catalog #: APRab09573**

For research use only.

**Summary**

<b>Description</b>	Rabbit polyclonal Antibody
<b>Host</b>	Rabbit
<b>Application</b>	WB,ELISA
<b>Reactivity</b>	Human,Mouse,Rat
<b>Conjugation</b>	Unconjugated
<b>Modification</b>	Unmodified
<b>Isotype</b>	IgG
<b>Clonality</b>	Polyclonal
<b>Form</b>	Liquid
<b>Concentration</b>	1mg/ml
<b>Storage</b>	Aliquot and store at -20°C (valid for 12 months). Avoid freeze/thaw cycles.
<b>Shipping</b>	Ice bags
<b>Buffer</b>	Liquid in PBS containing 50% glycerol, 0.5% protective protein and 0.02% New type preservative N.
<b>Purification</b>	Affinity purification

**Application**

<b>Dilution Ratio</b>	WB 1:500-1:2000,ELISA 1:10000-1:20000
<b>Molecular Weight</b>	34kDa

**Antigen Information**

<b>Gene Name</b>	CYB5R1
<b>Alternative Names</b>	CYB5R1; NQO3A2; NADH-cytochrome b5 reductase 1; b5R.1; Humb5R2; NAD(P)H:quinone oxidoreductase type 3 polypeptide A2
<b>Gene ID</b>	51706.0
<b>SwissProt ID</b>	Q9UHQ9
<b>Immunogen</b>	The antiserum was produced against synthesized peptide derived from human CYB5R1. AA range:9-58

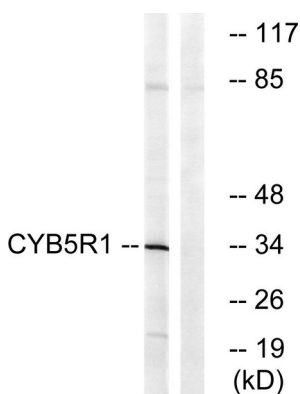
**Background**

catalytic activity:NADH + 2 ferricytochrome b5 = NAD(+) + H(+) + 2 ferrocyanochrome b5.,cofactor:FAD.,function:NADH-cytochrome b5 reductases are involved in desaturation and elongation of fatty acids, cholesterol biosynthesis, drug metabolism, and, in erythrocyte, methemoglobin reduction.,similarity:Belongs to the flavoprotein pyridine nucleotide cytochrome reductase family.,similarity:Contains 1 FAD-binding FR-type domain.,tissue specificity:Widely expressed.,catalytic activity:NADH + 2 ferricytochrome b5 = NAD(+) + H(+) + 2 ferrocyanochrome b5.,cofactor:FAD.,function:NADH-cytochrome b5 reductases are involved in desaturation and elongation of fatty acids, cholesterol biosynthesis, drug metabolism, and, in erythrocyte, methemoglobin reduction.,similarity:Belongs to the flavoprotein pyridine nucleotide cytochrome reductase family.,similarity:Contains 1 FAD-binding FR-type domain.,tissue specificity:Widely expressed.,

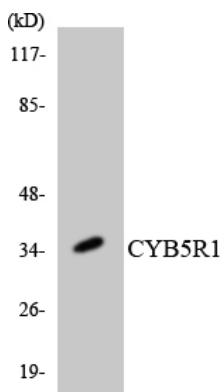
## Research Area

Amino sugar and nucleotide sugar metabolism;

## Image Data



Western blot analysis of lysates from RAW264.7 cells, using CYB5R1 Antibody. The lane on the right is blocked with the synthesized peptide.



Western blot analysis of the lysates from K562 cells using CYB5R1 antibody.