
Product Name: CYB561D2 Rabbit Polyclonal Antibody**Catalog #: APRab09571**

For research use only.

Summary

Description	Rabbit polyclonal Antibody
Host	Rabbit
Application	WB,ELISA
Reactivity	Human,Rat,Mouse
Conjugation	Unconjugated
Modification	Unmodified
Isotype	IgG
Clonality	Polyclonal
Form	Liquid
Concentration	1mg/ml
Storage	Aliquot and store at -20°C (valid for 12 months). Avoid freeze/thaw cycles.
Shipping	Ice bags
Buffer	Liquid in PBS containing 50% glycerol, 0.5% protective protein and 0.02% New type preservative N.
Purification	Affinity purification

Application

Dilution Ratio	WB 1:500-1:2000,ELISA 1:10000-1:20000
Molecular Weight	24kDa

Antigen Information

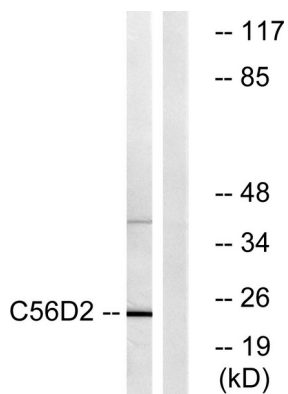
Gene Name	CYB561D2
Alternative Names	CYB561D2; 101F6; LUCA12.2; Cytochrome b561 domain-containing protein 2; Putative tumor suppressor protein 101F6
Gene ID	11068.0
SwissProt ID	O14569
Immunogen	The antiserum was produced against synthesized peptide derived from human C56D2. AA range:55-104

Background

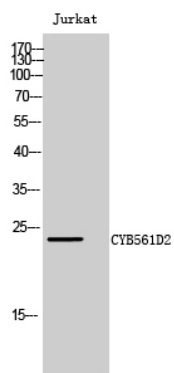
cofactor: Binds 2 heme groups non-covalently., similarity: Contains 1 cytochrome b561 domain., cofactor: Binds 2 heme groups non-covalently., similarity: Contains 1 cytochrome b561 domain.,

Research Area

Image Data



Western blot analysis of lysates from Jurkat cells, using C56D2 Antibody. The lane on the right is blocked with the synthesized peptide.



Western Blot analysis of Jurkat cells using CYB561D2 Polyclonal Antibody