
Product Name: CXCR-7 Rabbit Polyclonal Antibody**Catalog #: APRab09564**

For research use only.

Summary

| | |
|----------------------|---------------------------------------------------------------------------------------------------|
| Description | Rabbit polyclonal Antibody |
| Host | Rabbit |
| Application | WB,ICC/IF,ELISA |
| Reactivity | Human,Mouse,Rat,Monkey |
| Conjugation | Unconjugated |
| Modification | Unmodified |
| Isotype | IgG |
| Clonality | Polyclonal |
| Form | Liquid |
| Concentration | 1mg/ml |
| Storage | Aliquot and store at -20°C (valid for 12 months). Avoid freeze/thaw cycles. |
| Shipping | Ice bags |
| Buffer | Liquid in PBS containing 50% glycerol, 0.5% protective protein and 0.02% New type preservative N. |
| Purification | Affinity purification |

Application

| | |
|-------------------------|-----------------------------------------------------------|
| Dilution Ratio | WB 1:500-1:2000,ICC/IF 1:200-1:1000,ELISA 1:10000-1:20000 |
| Molecular Weight | 41kDa |

Antigen Information

| | |
|--------------------------|-------------------------------------------------------------------------------------------------------------|
| Gene Name | CXCR7 CXCR7; CMKOR1; GPR159; RDC1; C-X-C chemokine receptor type 7; CXC-R7; CXCR-7; |
| Alternative Names | Chemokine orphan receptor 1; G-protein coupled receptor 159; G-protein coupled receptor RDC1 homolog; RDC-1 |
| Gene ID | 57007.0 |
| SwissProt ID | P25106 |
| Immunogen | The antiserum was produced against synthesized peptide derived from human CXCR7. AA range:311-360 |

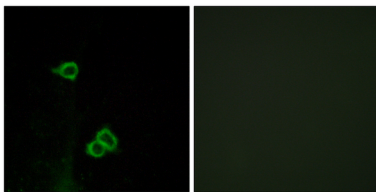
Background

This gene encodes a member of the G-protein coupled receptor family. Although this protein was earlier thought to be a receptor for vasoactive intestinal peptide (VIP), it is now considered to be an orphan receptor, in that its endogenous ligand has not been identified. The protein is also a coreceptor for human immunodeficiency viruses (HIV). Translocations involving this gene and HMGA2 on chromosome 12 have been observed in lipomas. [provided by RefSeq, Jul 2008], caution: Was originally (PubMed:1675791) thought to be the receptor for VIP., function: Receptor for CXCL12/SDF1. Acts as coreceptor with CXCR4 for a restricted number of HIV isolates., online information: CXC chemokine receptors entry, similarity: Belongs to the G-protein coupled receptor 1 family., tissue specificity: Expressed in monocytes, basophils, and B-cells. Lower expression in CD4+ T-lymphocytes and natural killer cells.,

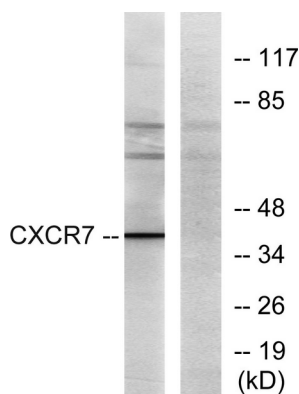
Research Area

Signal Transduction

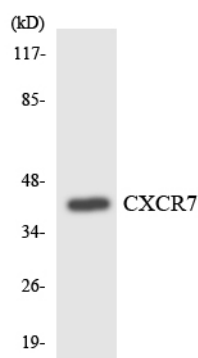
Image Data



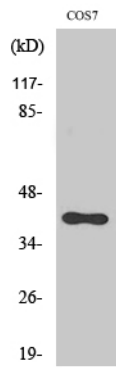
Immunofluorescence analysis of COS7 cells, using CXCR7 Antibody. The picture on the right is blocked with the synthesized peptide.



Western blot analysis of lysates from COS7 cells, using CXCR7 Antibody. The lane on the right is blocked with the synthesized peptide.



Western blot analysis of the lysates from RAW264.7 cells using CXCR7 antibody.



Western Blot analysis of various cells using CXCR-7 Polyclonal Antibody diluted at 1 : 2000