
Product Name: CUL-1 Rabbit Polyclonal Antibody**Catalog #: APRab09531**

For research use only.

Summary

Description	Rabbit polyclonal Antibody
Host	Rabbit
Application	WB,IHC,ICC/IF,ELISA
Reactivity	Human,Mouse,Rat
Conjugation	Unconjugated
Modification	Unmodified
Isotype	IgG
Clonality	Polyclonal
Form	Liquid
Concentration	1mg/ml
Storage	Aliquot and store at -20°C (valid for 12 months). Avoid freeze/thaw cycles.
Shipping	Ice bags
Buffer	Liquid in PBS containing 50% glycerol, 0.5% protective protein and 0.02% New type preservative N.
Purification	Affinity purification

Application

Dilution Ratio	WB 1:500-1:2000,IHC 1:100-1:300,ICC/IF 1:200-1:1000,ELISA 1:10000-1:20000
Molecular Weight	90kDa

Antigen Information

Gene Name	CUL1
Alternative Names	CUL1; Cullin-1; CUL-1
Gene ID	8454.0
SwissProt ID	Q13616
Immunogen	The antiserum was produced against synthesized peptide derived from human Cullin 1. AA range:727-776

Background

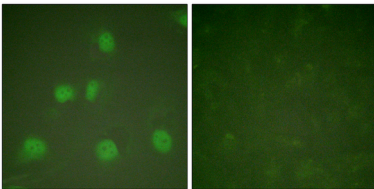
Cullin1 (CUL1) belongs to the cullin family proteins that are scaffold proteins for the Ring finger type E3 ligases. Human has

seven cullin proteins: CUL1-3, CUL4A, CUL4B, CUL5, and CUL7. Cullin1 is the mammalian homolog of Cdc53 from yeast. CUL1 has been shown to mediate ubiquitin dependent degradation of p21 Waf1/Cip1, cyclin D and IκBα. Each cullin protein can form an E3 ligase similar to the prototype Ring-type E3 ligase Skp1-CUL1-F-box complex. The Cullin-RING-finger type E3 ligases are important regulators in early embryonic development, as highlighted by genetic studies demonstrating that knock-out of CUL1, CUL3, or CUL4A in mice results in early embryonic lethality.

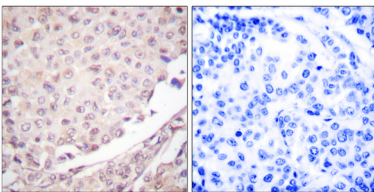
Research Area

Cell_Cycle_G1S;Cell_Cycle_G2M_DNA;Oocyte meiosis;Ubiquitin mediated proteolysis;WNT;WNT-T CELLTGF-beta;

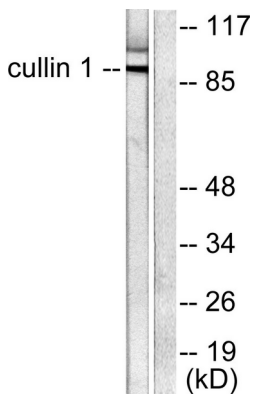
Image Data



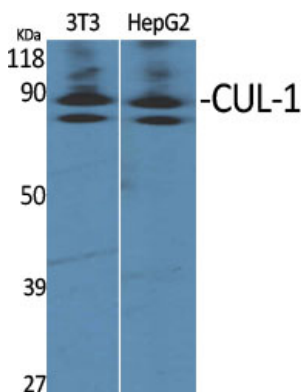
Immunofluorescence analysis of HeLa cells, using Cullin 1 Antibody. The picture on the right is blocked with the synthesized peptide.



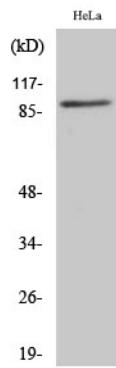
Immunohistochemistry analysis of paraffin-embedded human lung carcinoma tissue, using Cullin 1 Antibody. The picture on the right is blocked with the synthesized peptide.



Western blot analysis of lysates from HeLa cells, using Cullin 1 Antibody. The lane on the right is blocked with the synthesized peptide.



Western Blot analysis of various cells using CUL-1 Polyclonal Antibody



Western Blot analysis of HeLa cells using CUL-1 Polyclonal Antibody