

---

**Product Name: C-TAK1 Rabbit Polyclonal Antibody****Catalog #: APRab09488**

For research use only.

**Summary**

|                      |   |
|----------------------|---|
| <b>Description</b>   | Rabbit polyclonal Antibody  |
| <b>Host</b>          | Rabbit  |
| <b>Application</b>   | WB,IHC,ICC/IF,ELISA   |
| <b>Reactivity</b>    | Human,Mouse,Rat   |
| <b>Conjugation</b>   | Unconjugated  |
| <b>Modification</b>  | Unmodified  |
| <b>Isotype</b>       | IgG   |
| <b>Clonality</b>     | Polyclonal  |
| <b>Form</b>          | Liquid  |
| <b>Concentration</b> | 1mg/ml  |
| <b>Storage</b>       | Aliquot and store at -20°C (valid for 12 months). Avoid freeze/thaw cycles.                       |
| <b>Shipping</b>      | Ice bags  |
| <b>Buffer</b>        | Liquid in PBS containing 50% glycerol, 0.5% protective protein and 0.02% New type preservative N. |
| <b>Purification</b>  | Affinity purification   |

**Application**

|                         |   |
|-------------------------|---|
| <b>Dilution Ratio</b>   | WB 1:500-1:2000,IHC 1:100-1:300,ICC/IF 1:200-1:1000,ELISA 1:20000-1:40000 |
| <b>Molecular Weight</b> | 85kDa   |

**Antigen Information**

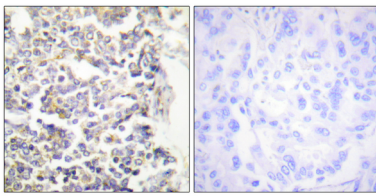
|                          |   |
|--------------------------|---|
| <b>Gene Name</b>         | MARK3<br>MARK3; CTAK1; EMK2; MAP/microtubule affinity-regulating kinase 3; C-TAK1; cTAK1;   |
| <b>Alternative Names</b> | Cdc25C-associated protein kinase 1; ELKL motif kinase 2; EMK-2; Protein kinase STK10; Ser/Thr protein kinase PAR-1; Par-1a; Serine/threonine-protein kinase p78 |
| <b>Gene ID</b>           | 4140.0  |
| <b>SwissProt ID</b>      | P27448  |
| <b>Immunogen</b>         | The antiserum was produced against synthesized peptide derived from human MARK3. AA range:1-50  |

## Background

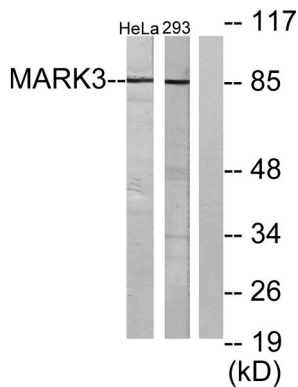
microtubule affinity regulating kinase 3(MARK3) Homo sapiens The protein encoded by this gene is activated by phosphorylation and in turn is involved in the phosphorylation of tau proteins MAP2 and MAP4. Several transcript variants encoding different isoforms have been found for this gene. [provided by RefSeq, Oct 2011],catalytic activity:ATP + a protein = ADP + a phosphoprotein.,function:Involved in the specific phosphorylation of microtubule-associated proteins for tau, MAP2 and MAP4. Phosphorylates CDC25C on 'Ser-216',similarity:Belongs to the protein kinase superfamily. CAMK Ser/Thr protein kinase family. MARK subfamily.,similarity:Contains 1 KA1 (kinase-associated) domain.,similarity:Contains 1 protein kinase domain.,similarity:Contains 1 UBA domain.,tissue specificity:Ubiquitous.,

## Research Area

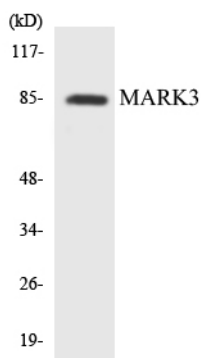
## Image Data



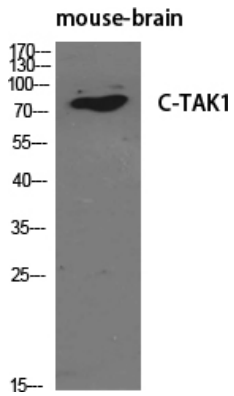
Immunohistochemistry analysis of paraffin-embedded human lung carcinoma tissue, using MARK3 Antibody. The picture on the right is blocked with the synthesized peptide.



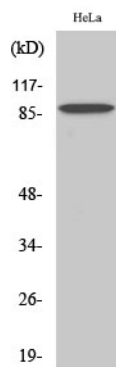
Western blot analysis of lysates from HeLa and 293 cells, using MARK3 Antibody. The lane on the right is blocked with the synthesized peptide.



Western blot analysis of the lysates from K562 cells using MARK3 antibody.



Western Blot analysis of various cells using C-TAK1 Polyclonal Antibody diluted at 1 : 500



Western Blot analysis of 293 cells using C-TAK1 Polyclonal Antibody diluted at 1: 500