

**Product Name: CSH1 Rabbit Polyclonal Antibody****Catalog #: APRab09451**

For research use only.

**Summary**

<b>Description</b>	Rabbit polyclonal Antibody
<b>Host</b>	Rabbit
<b>Application</b>	WB,IHC,ICC/IF,ELISA
<b>Reactivity</b>	Human,Rat,Mouse
<b>Conjugation</b>	Unconjugated
<b>Modification</b>	Unmodified
<b>Isotype</b>	IgG
<b>Clonality</b>	Polyclonal
<b>Form</b>	Liquid
<b>Concentration</b>	1mg/ml
<b>Storage</b>	Aliquot and store at -20°C (valid for 12 months). Avoid freeze/thaw cycles.
<b>Shipping</b>	Ice bags
<b>Buffer</b>	Liquid in PBS containing 50% glycerol, 0.5% protective protein and 0.02% New type preservative N.
<b>Purification</b>	Affinity purification

**Application**

<b>Dilution Ratio</b>	WB 1:500-1:2000,IHC 1:100-1:300,ICC/IF 1:50-1:200,ELISA 1:10000-1:20000
<b>Molecular Weight</b>	25kDa

**Antigen Information**

<b>Gene Name</b>	CSH1; CSH2
<b>Alternative Names</b>	CSH1; CSH2
<b>Gene ID</b>	1442.0
<b>SwissProt ID</b>	P01243
<b>Immunogen</b>	Synthetic peptide from human protein at AA range: 161-210

**Background**

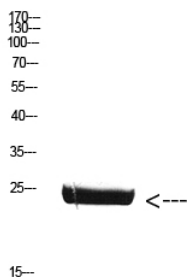
The protein encoded by this gene is a member of the somatotropin/prolactin family of hormones and plays an important role in growth control. The gene is located at the growth hormone locus on chromosome 17 along with four other related genes in

the same transcriptional orientation; an arrangement which is thought to have evolved by a series of gene duplications. Although the five genes share a remarkably high degree of sequence identity, they are expressed selectively in different tissues. Alternative splicing generates additional isoforms of each of the five growth hormones, leading to further diversity and potential for specialization. This particular family member is expressed mainly in the placenta and utilizes multiple transcription initiation sites. Expression of the identical mature proteins for chorionic somatomammotropin hormones 1 and 2 is upregulated during development, alfunction:Similar to that of somatotropin.,miscellaneous:The sequence of CSH1 is shown.,similarity:Belongs to the somatotropin/prolactin family.,

## Research Area

Neuroactive ligand-receptor interaction;Jak\_STAT;

## Image Data



Western Blot analysis of mouse-brain cells using Antibody diluted at 800. Secondary antibody was diluted at 1:20000