

---

**Product Name: CRSP150 Rabbit Polyclonal Antibody****Catalog #: APRab09424**

For research use only.

**Summary**

<b>Description</b>	Rabbit polyclonal Antibody
<b>Host</b>	Rabbit
<b>Application</b>	IHC,ICC/IF,ELISA
<b>Reactivity</b>	Human,Mouse
<b>Conjugation</b>	Unconjugated
<b>Modification</b>	Unmodified
<b>Isotype</b>	IgG
<b>Clonality</b>	Polyclonal
<b>Form</b>	Liquid
<b>Concentration</b>	1mg/ml
<b>Storage</b>	Aliquot and store at -20°C (valid for 12 months). Avoid freeze/thaw cycles.
<b>Shipping</b>	Ice bags
<b>Buffer</b>	Liquid in PBS containing 50% glycerol, 0.5% protective protein and 0.02% New type preservative N.
<b>Purification</b>	Affinity purification

**Application**

**Dilution Ratio** IHC 1:100-1:300,ICC/IF 1:200-1:1000,ELISA 1:20000-1:40000

**Molecular Weight**

**Antigen Information**

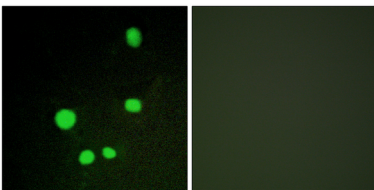
<b>Gene Name</b>	MED14 MED14; ARC150; CRSP2; CXorf4; DRIP150; EXLM1; RGR1; TRAP170; Mediator of RNA
<b>Alternative Names</b>	polymerase II transcription subunit 14; Activator-recruited cofactor 150 kDa component; ARC150; Cofactor required for Sp1 transcriptional activation subunit 2; CRS
<b>Gene ID</b>	9282.0
<b>SwissProt ID</b>	O60244
<b>Immunogen</b>	The antiserum was produced against synthesized peptide derived from human MED14. AA range:701-750

## Background

The activation of gene transcription is a multistep process that is triggered by factors that recognize transcriptional enhancer sites in DNA. These factors work with co-activators to direct transcriptional initiation by the RNA polymerase II apparatus. The protein encoded by this gene is a subunit of the CRSP (cofactor required for SP1 activation) complex, which, along with TFIID, is required for efficient activation by SP1. This protein is also a component of other multisubunit complexes e.g. thyroid hormone receptor-(TR-) associated proteins which interact with TR and facilitate TR function on DNA templates in conjunction with initiation factors and cofactors. This protein contains a bipartite nuclear localization signal. This gene is known to escape chromosome X-inactivation. [provided by RefSeq, Jul 2008],function:Component of the Mediator complex, a coactivator involved in the regulated transcription of nearly all RNA polymerase II-dependent genes. Mediator functions as a bridge to convey information from gene-specific regulatory proteins to the basal RNA polymerase II transcription machinery. Mediator is recruited to promoters by direct interactions with regulatory proteins and serves as a scaffold for the assembly of a functional preinitiation complex with RNA polymerase II and the general transcription factors.,similarity:Belongs to the Mediator complex subunit 14 family.,subunit:Interacts with GATA1 (By similarity). Component of the Mediator complex, which is composed of MED1, MED4, MED6, MED7, MED8, MED9, MED10, MED11, MED12, MED13, MED13L, MED14, MED15, MED16, MED17, MED18, MED19, MED20, MED21, MED22, MED23, MED24, MED25, MED26, MED27, MED29, MED30, MED31, CCNC, CDK8 and CDC2L6/CDK11. The MED12, MED13, CCNC and CDK8 subunits form a distinct module termed the CDK8 module. Mediator containing the CDK8 module is less active than Mediator lacking this module in supporting transcriptional activation. Individual preparations of the Mediator complex lacking one or more distinct subunits have been variously termed ARC, CRSP, DRIP, PC2, SMCC and TRAP. Interacts with AR, ESR1, SREBF1 and STAT2.,tissue specificity:Ubiquitous.,

## Research Area

### Image Data



Immunofluorescence analysis of COS7 cells, using MED14 Antibody. The picture on the right is blocked with the synthesized peptide.