

Product Name: CREG1 Rabbit Polyclonal Antibody**Catalog #: APRab09382**

For research use only.

Summary

Description	Rabbit polyclonal Antibody
Host	Rabbit
Application	WB,ELISA
Reactivity	Human,Rat,Mouse
Conjugation	Unconjugated
Modification	Unmodified
Isotype	IgG
Clonality	Polyclonal
Form	Liquid
Concentration	1mg/ml
Storage	Aliquot and store at -20°C (valid for 12 months). Avoid freeze/thaw cycles.
Shipping	Ice bags
Buffer	Liquid in PBS containing 50% glycerol, and 0.02% New type preservative N.
Purification	Affinity purification

Application

Dilution Ratio	WB 1:500-1:2000,ELISA 1:5000-1:20000
Molecular Weight	24kDa

Antigen Information

Gene Name	CREG1 CREG UNQ727/PRO1409
Alternative Names	
Gene ID	8804.0
SwissProt ID	O75629
Immunogen	Synthesized peptide derived from part region of human protein

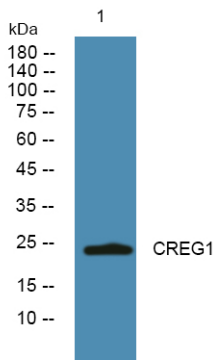
Background

The adenovirus E1A protein both activates and represses gene expression to promote cellular proliferation and inhibit differentiation. The protein encoded by this gene antagonizes transcriptional activation and cellular transformation by E1A. This protein shares limited sequence similarity with E1A and binds both the general transcription factor TBP and the tumor

suppressor pRb in vitro. This gene may contribute to the transcriptional control of cell growth and differentiation. [provided by RefSeq, Jul 2008],function:May contribute to the transcriptional control of cell growth and differentiation. Antagonizes transcriptional activation and cellular transformation by the adenovirus E1A protein. The transcriptional control activity of cell growth requires interaction with IGF2R.,PTM:N-glycosylated.,similarity:Belongs to the CREG family.,subunit:Homodimer. Interacts with IGF2R; the interaction is dependent on glycosylation.,

Research Area

Image Data



Western blot analysis of lysates from U2OS cells, CREG1 Rabbit Polyclonal Antibody was diluted at 1:1000, 4° over night