
Product Name: CPZ Rabbit Polyclonal Antibody**Catalog #: APRab09339**

For research use only.

Summary

Description	Rabbit polyclonal Antibody
Host	Rabbit
Application	WB,ELISA
Reactivity	Human,Rat
Conjugation	Unconjugated
Modification	Unmodified
Isotype	IgG
Clonality	Polyclonal
Form	Liquid
Concentration	1mg/ml
Storage	Aliquot and store at -20°C (valid for 12 months). Avoid freeze/thaw cycles.
Shipping	Ice bags
Buffer	Liquid in PBS containing 50% glycerol, 0.5% protective protein and 0.02% New type preservative N.
Purification	Affinity purification

Application

Dilution Ratio	WB 1:500-1:2000,ELISA 1:20000-1:40000
Molecular Weight	73kDa

Antigen Information

Gene Name	CPZ
Alternative Names	CPZ; Carboxypeptidase Z; CPZ
Gene ID	8532.0
SwissProt ID	Q66K79
Immunogen	Synthesized peptide derived from CPZ . at AA range: 330-410

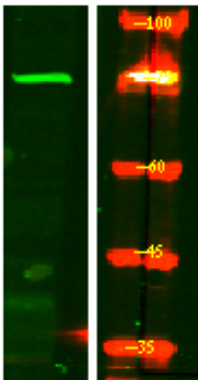
Background

carboxypeptidase Z(CPZ) Homo sapiens This gene encodes a member of the metallocarboxypeptidase family. This enzyme displays carboxypeptidase activity towards substrates with basic C-terminal residues. It is most active at neutral pH and is

inhibited by active site-directed inhibitors of metalloproteases. Alternative splicing in the coding region results in multiple transcript variants encoding different isoforms. [provided by RefSeq, Jul 2008],cofactor:Requires 1 zinc ion per subunit.,enzyme regulation:Inhibited by 2-mercaptomethyl-3-guanidinoethylthiopropionic acid (MGTA) and guanidinoethylmercaptosuccinic acid (GEMSA). Inhibited by chelating agents such as EDTA and EGTA.,function:Cleaves substrates with C-terminal arginine residues. Probably modulates the Wnt signaling pathway, by cleaving some undefined protein. May play a role in cleavage during prohormone processing.,similarity:Belongs to the peptidase M14 family.,similarity:Contains 1 FZ (frizzled) domain.,tissue specificity:In placenta, it is present within invasive trophoblasts and in the surrounding extracellular space. Also present in amnion cells, but is not readily apparent in the extracellular matrix of this cell type. Present in normal pituitary gland and neoplastic pituitary gland (especially POMC-, GH- and PRL-producing adenomas) (at protein level). Widely expressed.,

Research Area

Image Data



Western Blot analysis of HEK293 lysis, using primary antibody at 1:1000 dilution. Secondary antibody was diluted at 1:10000