
Product Name: CPTI-M Rabbit Polyclonal Antibody**Catalog #: APRab09335**

For research use only.

Summary

Description	Rabbit polyclonal Antibody
Host	Rabbit
Application	WB,IHC,ICC/IF,ELISA
Reactivity	Human,Rat,Mouse
Conjugation	Unconjugated
Modification	Unmodified
Isotype	IgG
Clonality	Polyclonal
Form	Liquid
Concentration	1mg/ml
Storage	Aliquot and store at -20°C (valid for 12 months). Avoid freeze/thaw cycles.
Shipping	Ice bags
Buffer	Liquid in PBS containing 50% glycerol, 0.5% protective protein and 0.02% New type preservative N.
Purification	Affinity purification

Application

Dilution Ratio	WB 1:500-1:2000,IHC 1:100-1:300,ICC/IF 1:50-1:200,ELISA 1:20000-1:40000
Molecular Weight	88kDa

Antigen Information

Gene Name	CPT1B CPT1B; KIAA1670; Carnitine O-palmitoyltransferase 1; muscle isoform; CPT1-M; Carnitine O-
Alternative Names	palmitoyltransferase I, muscle isoform; CPT I; CPTI-M; Carnitine palmitoyltransferase 1B; Carnitine palmitoyltransferase I-like protein
Gene ID	1120/1375
SwissProt ID	Q92523
Immunogen	The antiserum was produced against synthesized peptide derived from human CPT1B. AA range:401-450

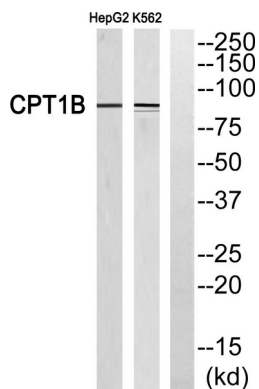
Background

The protein encoded by this gene, a member of the carnitine/choline acetyltransferase family, is the rate-controlling enzyme of the long-chain fatty acid beta-oxidation pathway in muscle mitochondria. This enzyme is required for the net transport of long-chain fatty acyl-CoAs from the cytoplasm into the mitochondria. Multiple transcript variants encoding different isoforms have been found for this gene, and read-through transcripts are expressed from the upstream locus that include exons from this gene. [provided by RefSeq, Jun 2009],catalytic activity:ATP + choline = ADP + O-phosphocholine.,catalytic activity:ATP + ethanolamine = ADP + O-phosphoethanolamine.,catalytic activity:Palmitoyl-CoA + L-carnitine = CoA + L-palmitoylcarnitine.,miscellaneous:This protein is produced by a bicistronic gene which also produces the CHKB protein from a non-overlapping reading frame.,miscellaneous:This protein is produced by a bicistronic gene which also produces the CPT1B protein from a non-overlapping reading frame.,pathway:Lipid metabolism; fatty acid beta-oxidation.,similarity:Belongs to the carnitine/choline acetyltransferase family.,similarity:Belongs to the choline/ethanolamine kinase family.,tissue specificity:Strong expression in heart and skeletal muscle. No expression in liver and kidney.,

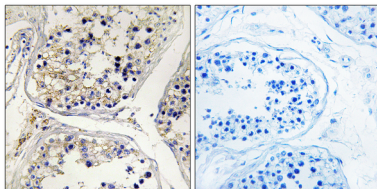
Research Area

Fatty acid metabolism;Glycerophospholipid metabolism;PPAR;Adipocytokine;

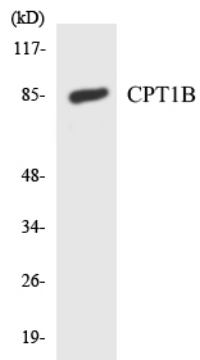
Image Data



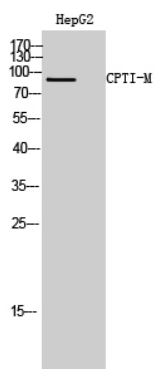
Western blot analysis of CPT1B Antibody. The lane on the right is blocked with the CPT1B peptide.



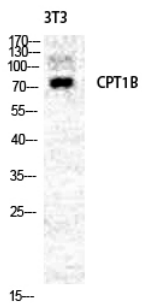
Immunohistochemistry analysis of paraffin-embedded human testis, using CPT1B Antibody. The lane on the right is blocked with the CPT1B peptide.



Western blot analysis of the lysates from HepG2 cells using CPT1B antibody.



Western Blot analysis of HepG2 cells using CPTI-M Polyclonal Antibody diluted at 1 : 2000



Western Blot analysis of NIH-3T3 cells using CPTI-M Polyclonal Antibody diluted at 1: 2000