
Product Name: CPM Rabbit Polyclonal Antibody**Catalog #: APRab09319**

For research use only.

Summary

Description	Rabbit polyclonal Antibody
Host	Rabbit
Application	WB,ELISA
Reactivity	Human,Rat,Mouse
Conjugation	Unconjugated
Modification	Unmodified
Isotype	IgG
Clonality	Polyclonal
Form	Liquid
Concentration	1mg/ml
Storage	Aliquot and store at -20°C (valid for 12 months). Avoid freeze/thaw cycles.
Shipping	Ice bags
Buffer	Liquid in PBS containing 50% glycerol, 0.5% protective protein and 0.02% New type preservative N.
Purification	Affinity purification

Application

Dilution Ratio	WB 1:500-1:2000,ELISA 1:20000-1:40000
Molecular Weight	51kDa

Antigen Information

Gene Name	CPM
Alternative Names	CPM; Carboxypeptidase M; CPM
Gene ID	1368.0
SwissProt ID	P14384
Immunogen	The antiserum was produced against synthesized peptide derived from human CPM. AA range:71-120

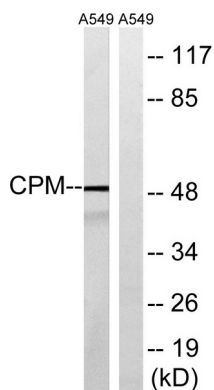
Background

carboxypeptidase M(CPM) Homo sapiens The protein encoded by this gene is a membrane-bound arginine/lysine

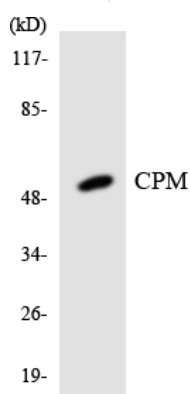
carboxypeptidase. Its expression is associated with monocyte to macrophage differentiation. This encoded protein contains hydrophobic regions at the amino and carboxy termini and has 6 potential asparagine-linked glycosylation sites. The active site residues of carboxypeptidases A and B are conserved in this protein. Three alternatively spliced transcript variants encoding the same protein have been described for this gene. [provided by RefSeq, Jul 2008],catalytic activity: Cleavage of C-terminal arginine or lysine residues from polypeptides.,cofactor: Binds 1 zinc ion per subunit.,enzyme regulation: Inhibited by O-phenanthroline and MGTA and activated by cobalt.,function: Specifically removes C-terminal basic residues (Arg or Lys) from peptides and proteins. It is believed to play important roles in the control of peptide hormone and growth factor activity at the cell surface, and in the membrane-localized degradation of extracellular proteins.,similarity: Belongs to the peptidase M14 family.,

Research Area

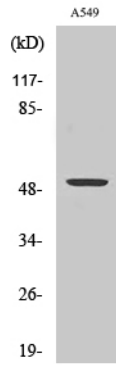
Image Data



Western blot analysis of lysates from A549 cells, using CPM Antibody. The lane on the right is blocked with the synthesized peptide.



Western blot analysis of the lysates from HT-29 cells using CPM antibody.



Western Blot analysis of various cells using CPM Polyclonal Antibody