

Product Name: cPLA2- γ Rabbit Polyclonal Antibody**Catalog #: APRab09315**

For research use only.

Summary

Description	Rabbit polyclonal Antibody
Host	Rabbit
Application	WB,ELISA
Reactivity	Human,Rat,Mouse
Conjugation	Unconjugated
Modification	Unmodified
Isotype	IgG
Clonality	Polyclonal
Form	Liquid
Concentration	1mg/ml
Storage	Aliquot and store at -20°C (valid for 12 months). Avoid freeze/thaw cycles.
Shipping	Ice bags
Buffer	Liquid in PBS containing 50% glycerol, 0.5% protective protein and 0.02% New type preservative N.
Purification	Affinity purification

Application

Dilution Ratio	WB 1:500-1:2000,ELISA 1:10000-1:20000
Molecular Weight	70kDa

Antigen Information

Gene Name	PLA2G4C
Alternative Names	PLA2G4C; Cytosolic phospholipase A2 gamma; cPLA2-gamma; Phospholipase A2 group IVC
Gene ID	8605.0
SwissProt ID	Q9UP65
Immunogen	The antiserum was produced against synthesized peptide derived from human PLA2G4C. AA range:301-350

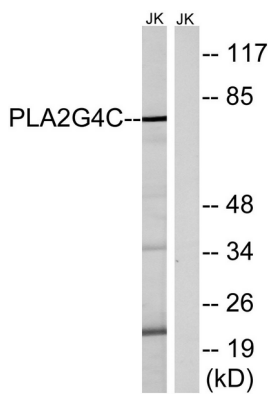
Background

This gene encodes a protein which is a member of the phospholipase A2 enzyme family which hydrolyzes glycerophospholipids

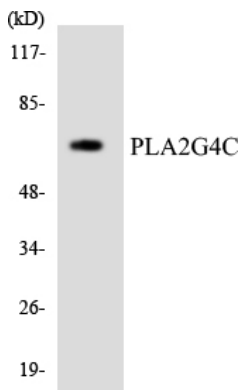
to produce free fatty acids and lysophospholipids, both of which serve as precursors in the production of signaling molecules. The encoded protein has been shown to be a calcium-independent and membrane bound enzyme. Multiple transcript variants encoding different isoforms have been found for this gene. [provided by RefSeq, Apr 2009], catalytic activity: Phosphatidylcholine + H₂O = 1-acylglycerophosphocholine + a carboxylate., enzyme regulation: Not regulated by calcium., function: Has a preference for arachidonic acid at the sn-2 position of phosphatidylcholine as compared with palmitic acid., similarity: Contains 1 PLA2c domain., tissue specificity: Highly expressed in heart and skeletal muscle.,

Research Area

Image Data



Western blot analysis of lysates from Jurkat cells, using PLA2G4C Antibody. The lane on the right is blocked with the synthesized peptide.



Western blot analysis of the lysates from HeLa cells using PLA2G4C antibody.