

Product Name: CPA1 Rabbit Polyclonal Antibody**Catalog #: APRab09306**

For research use only.

Summary

Description	Rabbit polyclonal Antibody
Host	Rabbit
Application	WB,IHC,ICC/IF,ELISA
Reactivity	Human,Rat,Mouse
Conjugation	Unconjugated
Modification	Unmodified
Isotype	IgG
Clonality	Polyclonal
Form	Liquid
Concentration	1mg/ml
Storage	Aliquot and store at -20°C (valid for 12 months). Avoid freeze/thaw cycles.
Shipping	Ice bags
Buffer	Liquid in PBS containing 50% glycerol, 0.5% protective protein and 0.02% New type preservative N.
Purification	Affinity purification

Application

Dilution Ratio	WB 1:500-1:2000,IHC 1:100-1:300,ICC/IF 1:50-1:200,ELISA 1:20000-1:40000
Molecular Weight	47kDa

Antigen Information

Gene Name	CPA1
Alternative Names	CPA1; CPA; Carboxypeptidase A1
Gene ID	1357.0
SwissProt ID	P15085
Immunogen	The antiserum was produced against synthesized peptide derived from human Carboxypeptidase A1. AA range:301-350

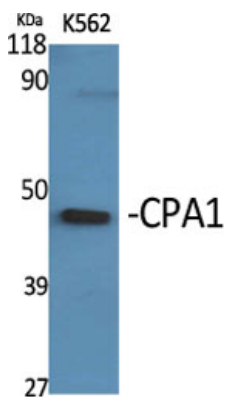
Background

This gene encodes a member of the carboxypeptidase A family of zinc metalloproteases. This enzyme is produced in the

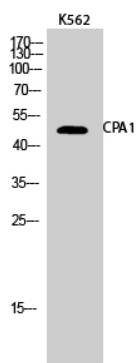
pancreas and preferentially cleaves C-terminal branched-chain and aromatic amino acids from dietary proteins. This gene and several family members are present in a gene cluster on chromosome 7. Mutations in this gene may be linked to chronic pancreatitis, while elevated protein levels may be associated with pancreatic cancer. [provided by RefSeq, Jan 2015], catalytic activity: Release of a C-terminal amino acid, but little or no action with -Asp, -Glu, -Arg, -Lys or -Pro., cofactor: Binds 1 zinc ion per subunit., similarity: Belongs to the peptidase M14 family., subunit: Monomer. May form a complex with proelastase 2.,

Research Area

Image Data



Western Blot analysis of various cells using CPA1 Polyclonal Antibody



Western Blot analysis of K562 cells using CPA1 Polyclonal Antibody