
Product Name: COX6B2 Rabbit Polyclonal Antibody**Catalog #: APRab09278**

For research use only.

Summary

Description	Rabbit polyclonal Antibody
Host	Rabbit
Application	IHC,ELISA
Reactivity	Human,Rat,Mouse
Conjugation	Unconjugated
Modification	Unmodified
Isotype	IgG
Clonality	Polyclonal
Form	Liquid
Concentration	1mg/ml
Storage	Aliquot and store at -20°C (valid for 12 months). Avoid freeze/thaw cycles.
Shipping	Ice bags
Buffer	Liquid in PBS containing 50% glycerol, 0.5% protective protein and 0.02% New type preservative N.
Purification	Affinity purification

Application

Dilution Ratio IHC 1:50-1:200,ELISA 1:5000-1:20000

Molecular Weight

Antigen Information

Gene Name	COX6B2
Alternative Names	Cytochrome c oxidase subunit 6B2 (Cancer/testis antigen 59;CT59;Cytochrome c oxidase subunit VIb isoform 2;COX VIb-2;Cytochrome c oxidase subunit VIb, testis-specific isoform)
Gene ID	125965.0
SwissProt ID	Q6YFQ2
Immunogen	Synthesized peptide derived from human COX6B2 AA range: 40-120

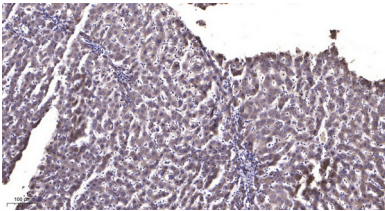
Background

function:Connects the two COX monomers into the physiological dimeric form.,similarity:Belongs to the cytochrome c oxidase

subunit 6B family.,tissue specificity:Testis specific. Weak expression in thymus and heart. Expressed in cancer cell lines.,function:Connects the two COX monomers into the physiological dimeric form.,similarity:Belongs to the cytochrome c oxidase subunit 6B family.,tissue specificity:Testis specific. Weak expression in thymus and heart. Expressed in cancer cell lines.,

Research Area

Image Data



Immunohistochemical analysis of paraffin-embedded human liver cancer. 1, Antibody was diluted at 1:200 (4° overnight) . 2, Tris-EDTA,pH9.0 was used for antigen retrieval. 3,Secondary antibody was diluted at 1:200 (room temperature, 45min) .