
Product Name: COX15 Rabbit Polyclonal Antibody**Catalog #: APRab09267**

For research use only.

Summary

| | |
|----------------------|---|
| Description | Rabbit polyclonal Antibody |
| Host | Rabbit |
| Application | IHC,ICC/IF,ELISA |
| Reactivity | Human,Mouse,Rat |
| Conjugation | Unconjugated |
| Modification | Unmodified |
| Isotype | IgG |
| Clonality | Polyclonal |
| Form | Liquid |
| Concentration | 1mg/ml |
| Storage | Aliquot and store at -20°C (valid for 12 months). Avoid freeze/thaw cycles. |
| Shipping | Ice bags |
| Buffer | Liquid in PBS containing 50% glycerol, 0.5% protective protein and 0.02% New type preservative N. |
| Purification | Affinity purification |

Application

Dilution Ratio IHC 1:100-1:300,ICC/IF 1:50-1:200,ELISA 1:5000-1:10000

Molecular Weight

Antigen Information

| | |
|--------------------------|---|
| Gene Name | COX15 |
| Alternative Names | COX15; Cytochrome c oxidase assembly protein COX15 homolog |
| Gene ID | 1355.0 |
| SwissProt ID | Q7KZN9 |
| Immunogen | The antiserum was produced against synthesized peptide derived from human COX15. AA range:181-230 |

Background

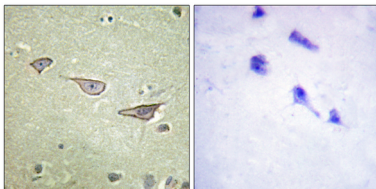
Cytochrome c oxidase (COX), the terminal component of the mitochondrial respiratory chain, catalyzes the electron transfer

from reduced cytochrome c to oxygen. This component is a heteromeric complex consisting of 3 catalytic subunits encoded by mitochondrial genes and multiple structural subunits encoded by nuclear genes. The mitochondrially-encoded subunits function in electron transfer, and the nuclear-encoded subunits may function in the regulation and assembly of the complex. This nuclear gene encodes a protein which is not a structural subunit, but may be essential for the biogenesis of COX formation and may function in the hydroxylation of heme O, according to the yeast mutant studies. This protein is predicted to contain 5 transmembrane domains localized in the mitochondrial inner membrane. Alternative splicing of this gene generates two transcript variants diverging disease: Defects in COX15 are a cause of cytochrome c oxidase deficiency (COX deficiency) [MIM:220110]. COX deficiency is a clinically heterogeneous disorder. The clinical features range from isolated myopathy to severe multisystem disease with onset from infancy to adulthood. disease: Defects in COX15 are a cause of Leigh syndrome [MIM:256000]. Leigh syndrome is an early-onset progressive neurodegenerative disorder characterized by delayed onset of symptoms, hypotonia, feeding difficulties, failure to thrive, motor regression and brainstem signs. Diagnosis is confirmed by the presence of focal, bilateral lesions in one or more areas of the central nervous system including the brainstem, thalamus, basal ganglia, cerebellum and spinal cord. function: May be involved in the biosynthesis of heme A. pathway: Porphyrin metabolism; heme A biosynthesis; heme A from heme O: step 1/1. similarity: Belongs to the COX15/ctaA family. tissue specificity: Predominantly found in tissues characterized by high rates of oxidative phosphorylation (OxPhos), including muscle, heart, and brain.

Research Area

Oxidative phosphorylation; Porphyrin and chlorophyll metabolism;

Image Data



Immunohistochemistry analysis of paraffin-embedded human brain tissue, using COX15 Antibody. The picture on the right is blocked with the synthesized peptide.