
Product Name: Copine 8 Rabbit Polyclonal Antibody**Catalog #: APRab09251**

For research use only.

Summary

Description	Rabbit polyclonal Antibody
Host	Rabbit
Application	WB,IHC,ICC/IF,ELISA
Reactivity	Human,Mouse,Rat
Conjugation	Unconjugated
Modification	Unmodified
Isotype	IgG
Clonality	Polyclonal
Form	Liquid
Concentration	1mg/ml
Storage	Aliquot and store at -20°C (valid for 12 months). Avoid freeze/thaw cycles.
Shipping	Ice bags
Buffer	Liquid in PBS containing 50% glycerol, 0.5% protective protein and 0.02% New type preservative N.
Purification	Affinity purification

Application

Dilution Ratio	WB 1:500-1:2000,IHC 1:100-1:300,ICC/IF 1:50-1:200,ELISA 1:20000-1:40000
Molecular Weight	65kDa

Antigen Information

Gene Name	CPNE8
Alternative Names	CPNE8; Copine-8; Copine VIII
Gene ID	144402.0
SwissProt ID	Q86YQ8
Immunogen	The antiserum was produced against synthesized peptide derived from human CPNE8. AA range:11-60

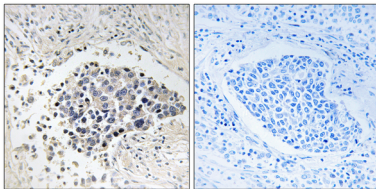
Background

copine 8(CPNE8) Homo sapiens Calcium-dependent membrane-binding proteins may regulate molecular events at the

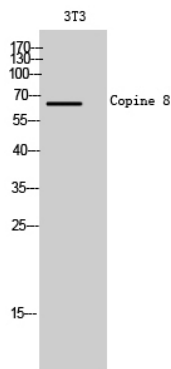
interface of the cell membrane and cytoplasm. This gene is one of several genes that encode a calcium-dependent protein containing two N-terminal type II C2 domains and an integrin A domain-like sequence in the C-terminus. [provided by RefSeq, Jul 2008],function:May function in membrane trafficking. Exhibits calcium-dependent phospholipid binding properties.,PTM:Phosphorylated upon DNA damage, probably by ATM or ATR.,similarity:Belongs to the copine family.,similarity:Contains 1 VWFA domain.,similarity:Contains 2 C2 domains.,

Research Area

Image Data



Immunohistochemistry analysis of paraffin-embedded human lung carcinoma tissue, using CPNE8 Antibody. The picture on the right is blocked with the synthesized peptide.



Western Blot analysis of 3T3 cells using Copine 8 Polyclonal Antibody