
Product Name: Contactin 2 Rabbit Polyclonal Antibody**Catalog #: APRab09241**

For research use only.

Summary

Description	Rabbit polyclonal Antibody
Host	Rabbit
Application	WB,ELISA
Reactivity	Human,Mouse,Rat
Conjugation	Unconjugated
Modification	Unmodified
Isotype	IgG
Clonality	Polyclonal
Form	Liquid
Concentration	1mg/ml
Storage	Aliquot and store at -20°C (valid for 12 months). Avoid freeze/thaw cycles.
Shipping	Ice bags
Buffer	Liquid in PBS containing 50% glycerol, 0.5% protective protein and 0.02% New type preservative N.
Purification	Affinity purification

Application

Dilution Ratio	WB 1:500-1:2000,ELISA 1:20000-1:40000
Molecular Weight	120kDa

Antigen Information

Gene Name	CNTN2
Alternative Names	CNTN2; AXT; TAG1; TAX1; Contactin-2; Axonal glycoprotein TAG-1; Axonin-1; Transient axonal glycoprotein 1; TAX-1
Gene ID	6900.0
SwissProt ID	Q02246
Immunogen	The antiserum was produced against synthesized peptide derived from human CNTN2. AA range:111-160

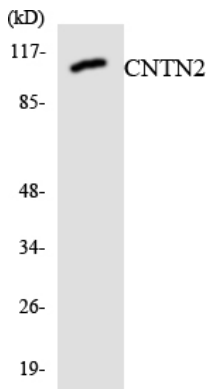
Background

This gene encodes a member of the contactin family of proteins, part of the immunoglobulin superfamily of cell adhesion molecules. The encoded glycosylphosphatidylinositol (GPI)-anchored neuronal membrane protein plays a role in the proliferation, migration, and axon guidance of neurons of the developing cerebellum. A mutation in this gene may be associated with adult myoclonic epilepsy. [provided by RefSeq, Sep 2016],function:May play a role in the initial growth and guidance of axons. May be involved in cell adhesion.,similarity:Belongs to the immunoglobulin superfamily. Contactin family.,similarity:Contains 4 fibronectin type-III domains.,similarity:Contains 6 Ig-like C2-type (immunoglobulin-like) domains.,subcellular location:Attached to the neuronal membrane by a GPI-anchor and is also released from neurons.,

Research Area

Cell adhesion molecules (CAMs);

Image Data



Western blot analysis of the lysates from HUVEC cells using CNTN2 antibody.