
Product Name: Connexin-45 Rabbit Polyclonal Antibody**Catalog #: APRab09239**

For research use only.

Summary

Description	Rabbit polyclonal Antibody
Host	Rabbit
Application	WB,IHC,ICC/IF,ELISA
Reactivity	Human,Mouse,Rat
Conjugation	Unconjugated
Modification	Unmodified
Isotype	IgG
Clonality	Polyclonal
Form	Liquid
Concentration	1mg/ml
Storage	Aliquot and store at -20°C (valid for 12 months). Avoid freeze/thaw cycles.
Shipping	Ice bags
Buffer	Liquid in PBS containing 50% glycerol, 0.5% protective protein and 0.02% New type preservative N.
Purification	Affinity purification

Application

Dilution Ratio	WB 1:500-1:2000,IHC 1:100-1:300,ICC/IF 1:50-1:200,ELISA 1:20000-1:40000
Molecular Weight	45kDa

Antigen Information

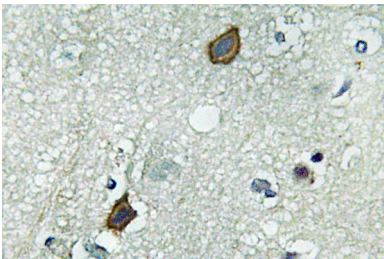
Gene Name	GJC1
Alternative Names	GJC1; GJA7; Gap junction gamma-1 protein; Connexin-45; Cx45; Gap junction alpha-7 protein
Gene ID	10052.0
SwissProt ID	P36383
Immunogen	The antiserum was produced against synthesized peptide derived from human Connexin-45. AA range:312-361

Background

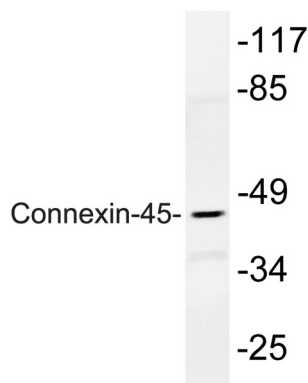
This gene is a member of the connexin gene family. The encoded protein is a component of gap junctions, which are composed of arrays of intercellular channels that provide a route for the diffusion of low molecular weight materials from cell to cell. Alternatively spliced transcript variants encoding the same isoform have been described. [provided by RefSeq, Jul 2008],function:One gap junction consists of a cluster of closely packed pairs of transmembrane channels, the connexons, through which materials of low MW diffuse from one cell to a neighboring cell.,similarity:Belongs to the connexin family. Gamma-type subfamily.,subunit:A connexon is composed of a hexamer of connexins.,

Research Area

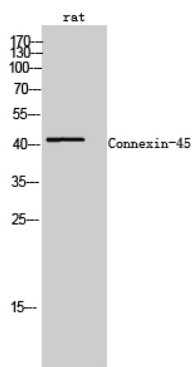
Image Data



Immunohistochemistry analysis of Connexin-45 antibody in paraffin-embedded human brain tissue.



Western blot analysis of lysate from rat heart, using Connexin-45 antibody.



Western Blot analysis of rat cells using Connexin-45 Polyclonal Antibody