

---

**Product Name: COL7A1 Rabbit Polyclonal Antibody****Catalog #: APRab09198**

For research use only.

**Summary**

<b>Description</b>	Rabbit polyclonal Antibody
<b>Host</b>	Rabbit
<b>Application</b>	IHC,ICC/IF,ELISA
<b>Reactivity</b>	Human,Mouse
<b>Conjugation</b>	Unconjugated
<b>Modification</b>	Unmodified
<b>Isotype</b>	IgG
<b>Clonality</b>	Polyclonal
<b>Form</b>	Liquid
<b>Concentration</b>	1mg/ml
<b>Storage</b>	Aliquot and store at -20°C (valid for 12 months). Avoid freeze/thaw cycles.
<b>Shipping</b>	Ice bags
<b>Buffer</b>	Liquid in PBS containing 50% glycerol, 0.5% protective protein and 0.02% New type preservative N.
<b>Purification</b>	Affinity purification

**Application**

**Dilution Ratio** IHC 1:100-1:300,ICC/IF 1:200-1:1000,ELISA 1:5000-1:10000

**Molecular Weight**

**Antigen Information**

<b>Gene Name</b>	COL7A1
<b>Alternative Names</b>	COL7A1; Collagen alpha-1(VII) chain; Long-chain collagen; LC collagen
<b>Gene ID</b>	1294.0
<b>SwissProt ID</b>	Q02388
<b>Immunogen</b>	The antiserum was produced against synthesized peptide derived from human Collagen VII alpha1. AA range:1841-1890

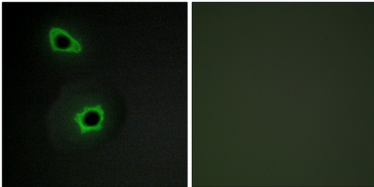
**Background**

collagen type VII alpha 1 chain(COL7A1) Homo sapiens This gene encodes the alpha chain of type VII collagen. The type VII

collagen fibril, composed of three identical alpha collagen chains, is restricted to the basement zone beneath stratified squamous epithelia. It functions as an anchoring fibril between the external epithelia and the underlying stroma. Mutations in this gene are associated with all forms of dystrophic epidermolysis bullosa. In the absence of mutations, however, an acquired form of this disease can result from an autoimmune response made to type VII collagen. [provided by RefSeq, Jul 2008],disease:Defects in COL7A1 are the cause of epidermolysis bullosa dystrophica (DEB) [MIM:131750, 226600].

## Research Area

## Image Data



Immunofluorescence analysis of COS7 cells, using Collagen VII alpha1 Antibody. The picture on the right is blocked with the synthesized peptide.