

---

**Product Name: COL2A1 Rabbit Polyclonal Antibody****Catalog #: APRab09183**

For research use only.

**Summary**

<b>Description</b>	Rabbit polyclonal Antibody
<b>Host</b>	Rabbit
<b>Application</b>	WB,IHC,ICC/IF,ELISA
<b>Reactivity</b>	Human,Mouse,Rat
<b>Conjugation</b>	Unconjugated
<b>Modification</b>	Unmodified
<b>Isotype</b>	IgG
<b>Clonality</b>	Polyclonal
<b>Form</b>	Liquid
<b>Concentration</b>	1mg/ml
<b>Storage</b>	Aliquot and store at -20°C (valid for 12 months). Avoid freeze/thaw cycles.
<b>Shipping</b>	Ice bags
<b>Buffer</b>	Liquid in PBS containing 50% glycerol, 0.5% protective protein and 0.02% New type preservative N.
<b>Purification</b>	Affinity purification

**Application**

<b>Dilution Ratio</b>	WB 1:500-1:2000,IHC 1:100-1:300,ICC/IF 1:200-1:1000,ELISA 1:10000-1:20000
<b>Molecular Weight</b>	140kDa

**Antigen Information**

<b>Gene Name</b>	COL2A1
<b>Alternative Names</b>	COL2A1; Collagen alpha-1(II) chain; Alpha-1 type II collagen
<b>Gene ID</b>	1280.0
<b>SwissProt ID</b>	P02458
<b>Immunogen</b>	The antiserum was produced against synthesized peptide derived from human Collagen II. AA range:101-150

**Background**

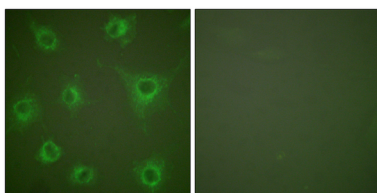
This gene encodes the alpha-1 chain of type II collagen, a fibrillar collagen found in cartilage and the vitreous humor of the eye.

Mutations in this gene are associated with achondrogenesis, chondrodysplasia, early onset familial osteoarthritis, SED congenita, Langer-Saldino achondrogenesis, Kniest dysplasia, Stickler syndrome type I, and spondyloepimetaphyseal dysplasia Strudwick type. In addition, defects in processing chondrocalcin, a calcium binding protein that is the C-propeptide of this collagen molecule, are also associated with chondrodysplasia.

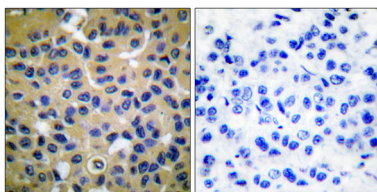
## Research Area

Focal adhesion;ECM-receptor interaction;

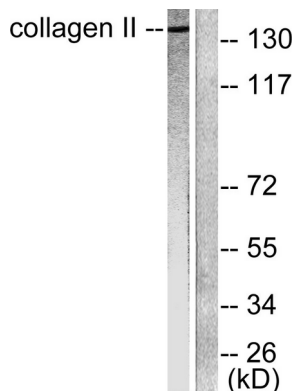
## Image Data



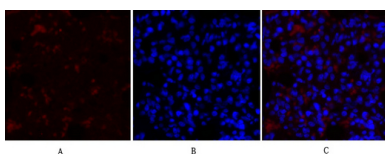
Immunofluorescence analysis of COS7 cells, using Collagen II Antibody. The picture on the right is blocked with the synthesized peptide.



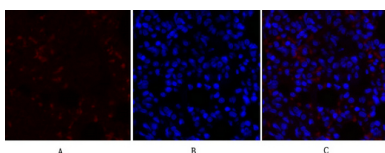
Immunohistochemistry analysis of paraffin-embedded human breast carcinoma tissue, using Collagen II Antibody. The picture on the right is blocked with the synthesized peptide.



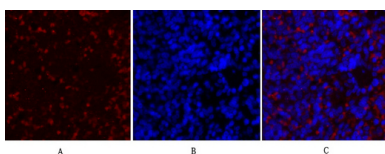
Western blot analysis of lysates from COLO205 cells, using Collagen II Antibody. The lane on the right is blocked with the synthesized peptide.



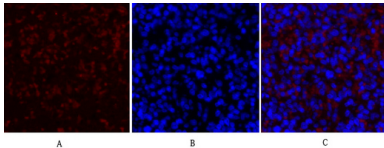
Immunofluorescence analysis of rat-lung tissue. 1,COL2A1 Polyclonal Antibody (red) was diluted at 1:200 (4°C,overnight) . 2, Cy3 labeled Secondary antibody was diluted at 1:300 (room temperature, 50min) .3, Picture B: DAPI (blue ) 10min. Picture A:Target. Picture B: DAPI. Picture C: merge of A+B



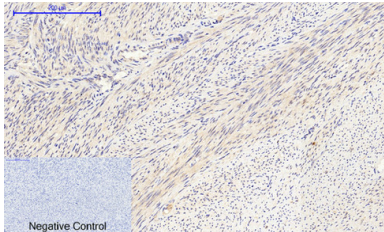
Immunofluorescence analysis of rat-lung tissue. 1,COL2A1 Polyclonal Antibody (red) was diluted at 1:200 (4°C,overnight) . 2, Cy3 labeled Secondary antibody was diluted at 1:300 (room temperature, 50min) .3, Picture B: DAPI (blue ) 10min. Picture A:Target. Picture B: DAPI. Picture C: merge of A+B



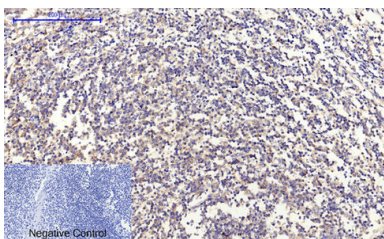
Immunofluorescence analysis of rat-spleen tissue. 1,COL2A1 Polyclonal Antibody (red) was diluted at 1:200 (4°C,overnight) . 2, Cy3 labeled Secondary antibody was diluted at 1:300 (room temperature, 50min) .3, Picture B: DAPI (blue) 10min. Picture A:Target. Picture B: DAPI. Picture C: merge of A+B



Immunofluorescence analysis of rat-spleen tissue. 1, COL2A1 Polyclonal Antibody (red) was diluted at 1:200 (4°C, overnight). 2, Cy3 labeled Secondary antibody was diluted at 1:300 (room temperature, 50min). 3, Picture B: DAPI (blue) 10min. Picture A: Target. Picture B: DAPI. Picture C: merge of A+B



Immunohistochemical analysis of paraffin-embedded Human-uterus tissue. 1, COL2A1 Polyclonal Antibody was diluted at 1:200 (4°C, overnight). 2, Sodium citrate pH 6.0 was used for antibody retrieval (>98°C, 20min). 3, Secondary antibody was diluted at 1:200 (room temperature, 30min). Negative control was used by secondary antibody only.



Immunohistochemical analysis of paraffin-embedded Human-Tonsil tissue. 1, COL2A1 Polyclonal Antibody was diluted at 1:200 (4°C, overnight). 2, Sodium citrate pH 6.0 was used for antibody retrieval (>98°C, 20min). 3, Secondary antibody was diluted at 1:200 (room temperature, 30min). Negative control was used by secondary antibody only.