

Product Name: COL25A1 Rabbit Polyclonal Antibody**Catalog #: APRab09182**

For research use only.

Summary

Description	Rabbit polyclonal Antibody
Host	Rabbit
Application	WB,ELISA
Reactivity	Human,Mouse
Conjugation	Unconjugated
Modification	Unmodified
Isotype	IgG
Clonality	Polyclonal
Form	Liquid
Concentration	1mg/ml
Storage	Aliquot and store at -20°C (valid for 12 months). Avoid freeze/thaw cycles.
Shipping	Ice bags
Buffer	Liquid in PBS containing 50% glycerol, 0.5% protective protein and 0.02% New type preservative N.
Purification	Affinity purification

Application

Dilution Ratio	WB 1:500-1:2000,ELISA 1:10000-1:20000
Molecular Weight	64kDa

Antigen Information

Gene Name	COL25A1
Alternative Names	COL25A1
Gene ID	84570.0
SwissProt ID	Q9BXS0
Immunogen	Synthetic peptide from human protein at AA range: 101-150

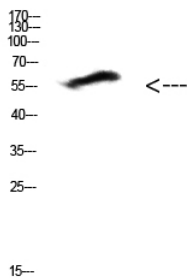
Background

This gene encodes a brain-specific membrane associated collagen. A product of proteolytic processing of the encoded protein, CLAC (collagenous Alzheimer amyloid plaque component), binds to amyloid beta-peptides found in Alzheimer amyloid

plaques but CLAC inhibits rather than facilitates amyloid fibril elongation (PMID: 16300410). A study of over-expression of this collagen in mice, however, found changes in pathology and behavior suggesting that the encoded protein may promote amyloid plaque formation (PMID: 19548013). Multiple transcript variants encoding different isoforms have been found for this gene. [provided by RefSeq, Dec 2011],caution:The pyrrolidone carboxylic acid reported in PubMed:11927537 probably formed artifactually from Glu-113 during the extraction procedure in 70% formic acid. In PubMed:15522881, the protein was found to have unblocked Glu at the N-terminus.,function:Inhibits fibrillization of beta amyloid peptide during the elongation phase. Has also been shown to assemble amyloid fibrils into protease-resistant aggregates. Binds heparin.,PTM:Glycosylated.,PTM:Hydroxylated on 11% of proline residues and 49% of lysine residues.,PTM:Undergoes proteolytic cleavage by furin protease to yield the soluble collagen-like Alzheimer amyloid plaque component.,similarity:Contains 7 collagen-like domains.,subcellular location:After proteolytic cleavage, CLAC is secreted.,subunit:Forms homodimers and homotrimers. Binds to the fibrillized forms of beta amyloid peptide 40 (beta-APP40) and beta amyloid peptide 42 (beta-APP42). Found associated with beta-APP42 more frequently than with beta-APP40.,tissue specificity:Expressed predominantly in brain. Deposited preferentially in primitive or neuritic amyloid plaques which are typical of Alzheimer's disease.,

Research Area

Image Data



Western Blot analysis of HEPG2 cells using Antibody diluted at 500. Secondary antibody was diluted at 1:20000