

Product Name: COL20A1 Rabbit Polyclonal Antibody**Catalog #: APRab09179**

For research use only.

Summary

Description	Rabbit polyclonal Antibody
Host	Rabbit
Application	WB,IHC,ICC/IF,ELISA
Reactivity	Human,Mouse,Rat
Conjugation	Unconjugated
Modification	Unmodified
Isotype	IgG
Clonality	Polyclonal
Form	Liquid
Concentration	1mg/ml
Storage	Aliquot and store at -20°C (valid for 12 months). Avoid freeze/thaw cycles.
Shipping	Ice bags
Buffer	Liquid in PBS containing 50% glycerol, 0.5% protective protein and 0.02% New type preservative N.
Purification	Affinity purification

Application

Dilution Ratio	WB 1:500-1:2000,IHC 1:100-1:300,ICC/IF 1:200-1:1000,ELISA 1:10000-1:20000
Molecular Weight	140kDa

Antigen Information

Gene Name	COL20A1
Alternative Names	COL20A1; KIAA1510; Collagen alpha-1(XX) chain
Gene ID	57642/1301/1289
SwissProt ID	Q9P218
Immunogen	The antiserum was produced against synthesized peptide derived from human Collagen XX alpha1. AA range:1151-1200

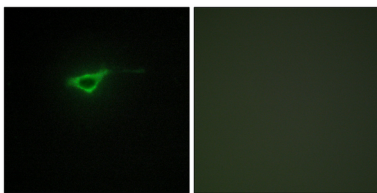
Background

COL20A1 (Collagen Type XX Alpha 1) is a Protein Coding gene. Among its related pathways are Collagen biosynthesis and

modifying enzymes and ERK Signaling. An important paralog of this gene is MATN1. function: Probable collagen protein., similarity: Contains 1 collagen-like domain., similarity: Contains 1 TSP N-terminal (TSPN) domain., similarity: Contains 1 VWFA domain., similarity: Contains 6 fibronectin type-III domains., tissue specificity: High expression in heart, lung, liver, skeletal muscle, kidney, pancreas, spleen, testis, ovary, subthalamic nucleus and fetal liver. Weak expression in other tissues tested.,

Research Area

Image Data



Immunofluorescence analysis of NIH/3T3 cells, using Collagen XX alpha1 Antibody. The picture on the right is blocked with the synthesized peptide.