
Product Name: CNTD2 Rabbit Polyclonal Antibody**Catalog #: APRab09137**

For research use only.

Summary

Description	Rabbit polyclonal Antibody
Host	Rabbit
Application	IHC,ICC/IF,ELISA
Reactivity	Human,Rat,Mouse
Conjugation	Unconjugated
Modification	Unmodified
Isotype	IgG
Clonality	Polyclonal
Form	Liquid
Concentration	1mg/ml
Storage	Aliquot and store at -20°C (valid for 12 months). Avoid freeze/thaw cycles.
Shipping	Ice bags
Buffer	Liquid in PBS containing 50% glycerol, 0.5% protective protein and 0.02% New type preservative N.
Purification	Affinity purification

Application

Dilution Ratio IHC 1:100-1:300,ICC/IF 1:50-1:200,ELISA 1:20000-1:40000

Molecular Weight

Antigen Information

Gene Name	CNTD2
Alternative Names	CNTD2; Cyclin N-terminal domain-containing protein 2
Gene ID	79935.0
SwissProt ID	Q9H8S5
Immunogen	The antiserum was produced against synthesized peptide derived from human CNTD2. AA range:51-100

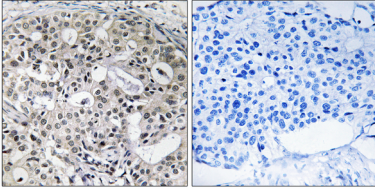
Background

similarity:Belongs to the cyclin family.,similarity:Contains 1 cyclin N-terminal domain.,similarity:Belongs to the cyclin

family,,similarity:Contains 1 cyclin N-terminal domain.,

Research Area

Image Data



Immunohistochemistry analysis of paraffin-embedded human breast carcinoma, using CNTD2 Antibody. The picture on the right is blocked with the synthesized peptide.