
Product Name: CNT2 Rabbit Polyclonal Antibody**Catalog #: APRab09136**

For research use only.

Summary

Description	Rabbit polyclonal Antibody
Host	Rabbit
Application	WB,IHC,ICC/IF,ELISA
Reactivity	Human,Mouse,Rat
Conjugation	Unconjugated
Modification	Unmodified
Isotype	IgG
Clonality	Polyclonal
Form	Liquid
Concentration	1mg/ml
Storage	Aliquot and store at -20°C (valid for 12 months). Avoid freeze/thaw cycles.
Shipping	Ice bags
Buffer	Liquid in PBS containing 50% glycerol, 0.5% protective protein and 0.02% New type preservative N.
Purification	Affinity purification

Application

Dilution Ratio	WB 1:500-1:2000,IHC 1:100-1:300,ICC/IF 1:50-1:200,ELISA 1:5000-1:20000
Molecular Weight	65kDa

Antigen Information

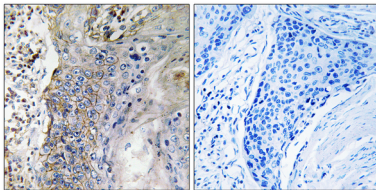
Gene Name	SLC28A2 SLC28A2; CNT2; Sodium/nucleoside cotransporter 2; Concentrative nucleoside transporter
Alternative Names	2; CNT 2; hCNT2; Na(+)/nucleoside cotransporter 2; Sodium-coupled nucleoside transporter 2; Sodium/purine nucleoside co-transporter; SPNT; Solute carrier
Gene ID	9153.0
SwissProt ID	O43868
Immunogen	The antiserum was produced against synthesized peptide derived from human SLC28A2. AA range:371-420

Background

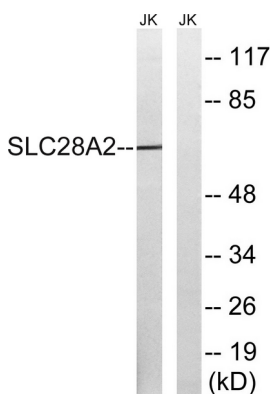
enzyme regulation:Inhibited by formycin B.,function:Sodium-dependent and purine-selective transporter. Exhibits the transport characteristics of the nucleoside transport system cif or N1 subtype (N1/cif) (selective for purine nucleosides and uridine). Plays a critical role in specific uptake and salvage of purine nucleosides in kidney and other tissues.,similarity:Belongs to the concentrative nucleoside transporter (CNT) (TC 2.A.41) family.,tissue specificity:Expressed in heart and skeletal muscle followed by liver, kidney, intestine, pancreas, placenta and brain. Weak expression in lung.,enzyme regulation:Inhibited by formycin B.,function:Sodium-dependent and purine-selective transporter. Exhibits the transport characteristics of the nucleoside transport system cif or N1 subtype (N1/cif) (selective for purine nucleosides and uridine). Plays a critical role in specific uptake and salvage of purine nucleosides in kidney and other tissues.,similarity:Belongs to the concentrative nucleoside transporter (CNT) (TC 2.A.41) family.,tissue specificity:Expressed in heart and skeletal muscle followed by liver, kidney, intestine, pancreas, placenta and brain. Weak expression in lung.,

Research Area

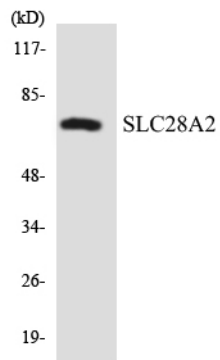
Image Data



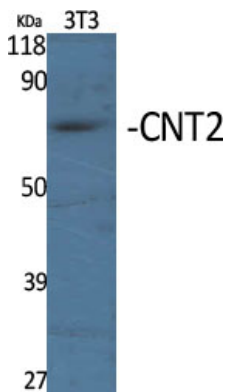
Immunohistochemistry analysis of paraffin-embedded human lung carcinoma tissue, using SLC28A2 Antibody. The picture on the right is blocked with the synthesized peptide.



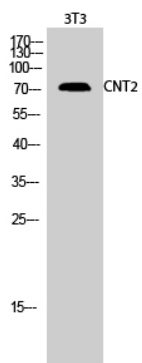
Western blot analysis of lysates from Jurkat cells, using SLC28A2 Antibody. The lane on the right is blocked with the synthesized peptide.



Western blot analysis of the lysates from HepG2 cells using SLC28A2 antibody.



Western Blot analysis of various cells using CNT2 Polyclonal Antibody



Western Blot analysis of 3T3 cells using CNT2 Polyclonal Antibody