

Product Name: CNPase Rabbit Polyclonal Antibody**Catalog #: APRab09132**

For research use only.

Summary

Description	Rabbit polyclonal Antibody
Host	Rabbit
Application	WB,IHC,ICC/IF,ELISA
Reactivity	Human,Mouse,Rat
Conjugation	Unconjugated
Modification	Unmodified
Isotype	IgG
Clonality	Polyclonal
Form	Liquid
Concentration	1mg/ml
Storage	Aliquot and store at -20°C (valid for 12 months). Avoid freeze/thaw cycles.
Shipping	Ice bags
Buffer	Liquid in PBS containing 50% glycerol, 0.5% protective protein and 0.02% New type preservative N.
Purification	Affinity purification

Application

Dilution Ratio	WB 1:500-1:2000,IHC 1:100-1:300,ICC/IF 1:50-1:200,ELISA 1:20000-1:40000
Molecular Weight	47kDa

Antigen Information

Gene Name	CNP
Alternative Names	CNP; 2'; 3'-cyclic-nucleotide 3'-phosphodiesterase; CNP; CNPase
Gene ID	1267.0
SwissProt ID	P09543
Immunogen	The antiserum was produced against synthesized peptide derived from human CNPase. AA range:59-108

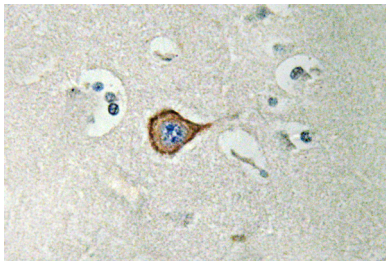
Background

catalytic activity:Nucleoside 2',3'-cyclic phosphate + H(2)O = nucleoside 2'-phosphate.,similarity:Belongs to the cyclic

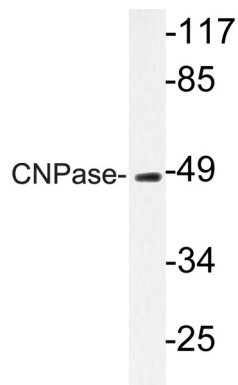
nucleotide phosphodiesterase family.,subcellular location:Firmly bound to membrane structures of brain white matter. Identified by mass spectrometry in melanosome fractions from stage I to stage IV.,catalytic activity:Nucleoside 2',3'-cyclic phosphate + H(2)O = nucleoside 2'-phosphate.,similarity:Belongs to the cyclic nucleotide phosphodiesterase family.,subcellular location:Firmly bound to membrane structures of brain white matter. Identified by mass spectrometry in melanosome fractions from stage I to stage IV.,

Research Area

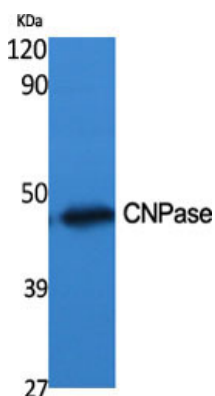
Image Data



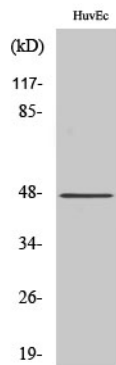
Immunohistochemistry analysis of CNPase antibody in paraffin-embedded human brain tissue.



Western blot analysis of lysate from HUVEC cells, using CNPase antibody.



Western Blot analysis of various cells using CNPase Polyclonal Antibody diluted at 1 : 500



Western Blot analysis of MCF7 cells using CNPase Polyclonal Antibody diluted at 1: 500