

---

**Product Name: CNG-2 Rabbit Polyclonal Antibody****Catalog #: APRab09117**

For research use only.

**Summary**

<b>Description</b>	Rabbit polyclonal Antibody
<b>Host</b>	Rabbit
<b>Application</b>	WB,ICC/IF,ELISA
<b>Reactivity</b>	Human,Mouse,Rat
<b>Conjugation</b>	Unconjugated
<b>Modification</b>	Unmodified
<b>Isotype</b>	IgG
<b>Clonality</b>	Polyclonal
<b>Form</b>	Liquid
<b>Concentration</b>	1mg/ml
<b>Storage</b>	Aliquot and store at -20°C (valid for 12 months). Avoid freeze/thaw cycles.
<b>Shipping</b>	Ice bags
<b>Buffer</b>	Liquid in PBS containing 50% glycerol, 0.5% protective protein and 0.02% New type preservative N.
<b>Purification</b>	Affinity purification

**Application**

<b>Dilution Ratio</b>	WB 1:500-1:2000,ICC/IF 1:200-1:1000,ELISA 1:20000-1:40000
<b>Molecular Weight</b>	83kDa

**Antigen Information**

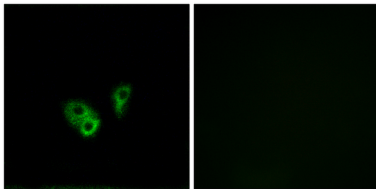
<b>Gene Name</b>	CNGA2
<b>Alternative Names</b>	CNGA2; CNCA; CNCA1; CNCG2; Cyclic nucleotide-gated olfactory channel; Cyclic nucleotide-gated cation channel 2; Cyclic nucleotide-gated channel alpha-2; CNG channel alpha-2; CNG-2; CNG2
<b>Gene ID</b>	1260.0
<b>SwissProt ID</b>	Q16280
<b>Immunogen</b>	The antiserum was produced against synthesized peptide derived from human CNGA2. AA range:391-440

## Background

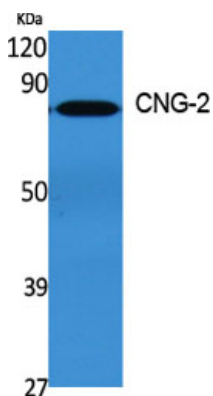
The protein encoded by this gene represents the alpha subunit of a cyclic nucleotide-gated olfactory channel. The encoded protein contains a carboxy-terminal leucine zipper that mediates channel formation. [provided by RefSeq, Jan 2010],function:Odorant signal transduction is probably mediated by a G-protein coupled cascade using cAMP as second messenger. The olfactory channel can be shown to be activated by cyclic nucleotides which leads to a depolarization of olfactory sensory neurons.,similarity:Belongs to the cyclic nucleotide-gated cation channel (TC 1.A.1.5) family.,similarity:Contains 1 cyclic nucleotide-binding domain.,

## Research Area

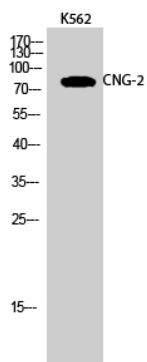
### Image Data



Immunofluorescence analysis of A549 cells, using CNGA2 Antibody. The picture on the right is blocked with the synthesized peptide.



Western Blot analysis of various cells using CNG-2 Polyclonal Antibody



Western Blot analysis of K562 cells using CNG-2 Polyclonal Antibody