
Product Name: CMTM4 Rabbit Polyclonal Antibody**Catalog #: APRab09087**

For research use only.

Summary

Description	Rabbit polyclonal Antibody
Host	Rabbit
Application	WB,IHC,ICC/IF,ELISA
Reactivity	Human,Mouse
Conjugation	Unconjugated
Modification	Unmodified
Isotype	IgG
Clonality	Polyclonal
Form	Liquid
Concentration	1mg/ml
Storage	Aliquot and store at -20°C (valid for 12 months). Avoid freeze/thaw cycles.
Shipping	Ice bags
Buffer	Liquid in PBS containing 50% glycerol, 0.5% protective protein and 0.02% New type preservative N.
Purification	Affinity purification

Application

Dilution Ratio	WB 1:500-1:2000,IHC 1:100-1:300,ICC/IF 1:100-1:300,ELISA 1:10000-1:20000
Molecular Weight	26kDa

Antigen Information

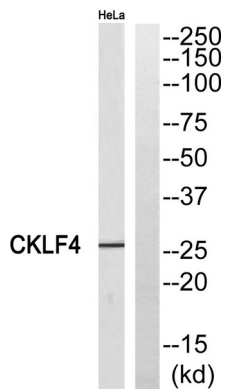
Gene Name	CMTM4
Alternative Names	CMTM4; CKLFSF4; CKLF-like MARVEL transmembrane domain-containing protein 4; Chemokine-like factor superfamily member 4
Gene ID	146223.0
SwissProt ID	Q8IZR5
Immunogen	The antiserum was produced against synthesized peptide derived from human CKLF4. AA range:161-210

Background

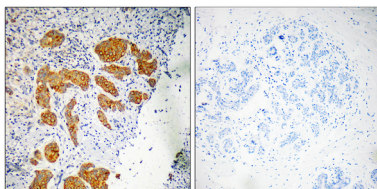
This gene belongs to the chemokine-like factor gene superfamily, a novel family that is similar to the chemokine and the transmembrane 4 superfamilies of signaling molecules. This gene is one of several chemokine-like factor genes located in a cluster on chromosome 16. Alternatively spliced transcript variants encoding different isoforms have been identified. [provided by RefSeq, Jul 2008],similarity:Belongs to the chemokine-like factor family.,similarity:Contains 1 MARVEL domain.,tissue specificity:Highly expressed in testis and prostate.,

Research Area

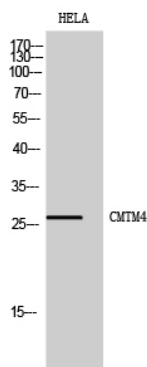
Image Data



Western blot analysis of CKLF4 Antibody. The lane on the right is blocked with the CKLF4 peptide.



Immunohistochemistry analysis of paraffin-embedded human breast carcinoma, using CKLF4 Antibody. The lane on the right is blocked with the CKLF4 peptide.



Western Blot analysis of HELA cells using CMTM4 Polyclonal Antibody