

---

**Product Name: CMTM3 Rabbit Polyclonal Antibody****Catalog #: APRab09086**

For research use only.

**Summary**

<b>Description</b>	Rabbit polyclonal Antibody
<b>Host</b>	Rabbit
<b>Application</b>	WB,ELISA
<b>Reactivity</b>	Human,Monkey
<b>Conjugation</b>	Unconjugated
<b>Modification</b>	Unmodified
<b>Isotype</b>	IgG
<b>Clonality</b>	Polyclonal
<b>Form</b>	Liquid
<b>Concentration</b>	1mg/ml
<b>Storage</b>	Aliquot and store at -20°C (valid for 12 months). Avoid freeze/thaw cycles.
<b>Shipping</b>	Ice bags
<b>Buffer</b>	Liquid in PBS containing 50% glycerol, 0.5% protective protein and 0.02% New type preservative N.
<b>Purification</b>	Affinity purification

**Application**

<b>Dilution Ratio</b>	WB 1:500-1:2000,ELISA 1:20000-1:40000
<b>Molecular Weight</b>	22kDa

**Antigen Information**

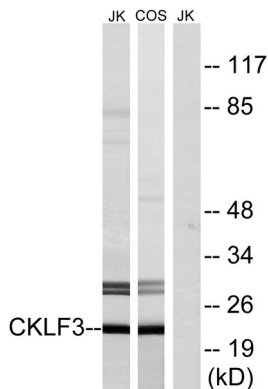
<b>Gene Name</b>	CMTM3
<b>Alternative Names</b>	CMTM3; CKLFSF3; CKLF-like MARVEL transmembrane domain-containing protein 3; Chemokine-like factor superfamily member 3
<b>Gene ID</b>	123920.0
<b>SwissProt ID</b>	Q96MX0
<b>Immunogen</b>	The antiserum was produced against synthesized peptide derived from human CKLF3. AA range:1-50

**Background**

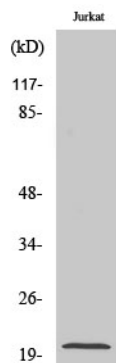
This gene belongs to the chemokine-like factor gene superfamily, a novel family that is similar to the chemokine and the transmembrane 4 superfamilies of signaling molecules. This gene is one of several chemokine-like factor genes located in a cluster on chromosome 16. Alternatively spliced transcript variants containing different 5' UTRs, but encoding the same protein, have been identified. [provided by RefSeq, Jul 2008],similarity:Belongs to the chemokine-like factor family.,similarity:Contains 1 MARVEL domain.,tissue specificity:Expressed in the leukocytes, placenta and testis.,

## Research Area

## Image Data



Western blot analysis of lysates from Jurkat and COS cells, using CKLF3 Antibody. The lane on the right is blocked with the synthesized peptide.



Western Blot analysis of various cells using CMTM3 Polyclonal Antibody diluted at 1 : 1000