
Product Name: CMTM2 Rabbit Polyclonal Antibody**Catalog #: APRab09085**

For research use only.

Summary

Description	Rabbit polyclonal Antibody
Host	Rabbit
Application	WB,ELISA
Reactivity	Human,Rat,Mouse
Conjugation	Unconjugated
Modification	Unmodified
Isotype	IgG
Clonality	Polyclonal
Form	Liquid
Concentration	1mg/ml
Storage	Aliquot and store at -20°C (valid for 12 months). Avoid freeze/thaw cycles.
Shipping	Ice bags
Buffer	Liquid in PBS containing 50% glycerol, 0.5% protective protein and 0.02% New type preservative N.
Purification	Affinity purification

Application

Dilution Ratio	WB 1:500-1:2000,ELISA 1:20000-1:40000
Molecular Weight	27kDa

Antigen Information

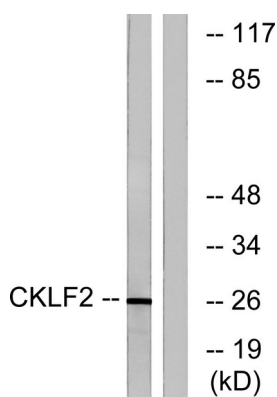
Gene Name	CMTM2
Alternative Names	CMTM2; CKLFSF2; CKLF-like MARVEL transmembrane domain-containing protein 2; Chemokine-like factor superfamily member 2
Gene ID	146225.0
SwissProt ID	Q8TAZ6
Immunogen	The antiserum was produced against synthesized peptide derived from human CKLF2. AA range:171-220

Background

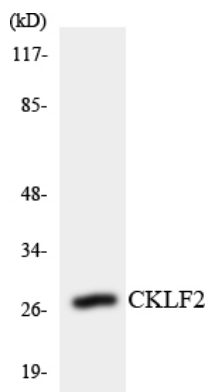
This gene belongs to the chemokine-like factor gene superfamily, a novel family that links the chemokine and the transmembrane 4 superfamilies of signaling molecules. The protein encoded by this gene may play an important role in testicular development. [provided by RefSeq, Jul 2008],similarity:Belongs to the chemokine-like factor family.,similarity:Contains 1 MARVEL domain.,tissue specificity:Highly expressed in testis.,

Research Area

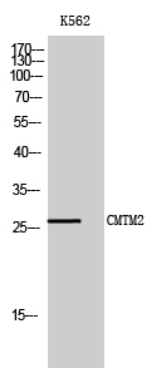
Image Data



Western blot analysis of lysates from K562 cells, using CKLF2 Antibody. The lane on the right is blocked with the synthesized peptide.



Western blot analysis of the lysates from COLO205 cells using CKLF2 antibody.



Western Blot analysis of K562 cells using CMTM2 Polyclonal Antibody