

Summary

Production Name	CLPTM1 Rabbit Polyclonal Antibody
Description	Rabbit Polyclonal Antibody
Host	Rabbit
Application	WB,IF-P,IF-F,ICC/IF,ELISA
Reactivity	Human,Mouse,Monkey

Performance

Conjugation	Unconjugated
Modification	Unmodified
Isotype	IgG
Clonality	Polyclonal
Form	Liquid
Storage	Store at 4°C short term. Aliquot and store at -20°C long term. Avoid freeze/thaw cycles.
Buffer	Liquid in PBS containing 50% glycerol, 0.5% protective protein and 0.02% New type preservative N.
Purification	Affinity purification

Immunogen

Gene Name	CLPTM1
Alternative Names	CLPTM1; Cleft lip and palate transmembrane protein 1
Gene ID	1209.0
SwissProt ID	O96005.The antiserum was produced against synthesized peptide derived from human CLPT1. AA range:200-249

Application

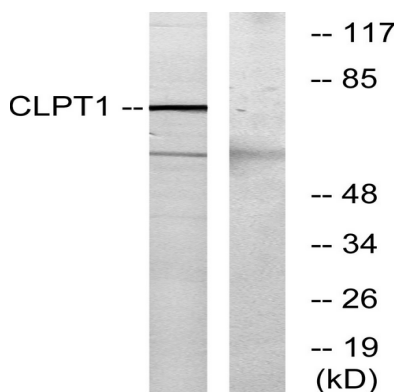
Dilution Ratio	WB 1:500-1:2000, IF-P/IF-F/ICC/IF 1:200-1:1000, ELISA 1:10000.Not yet tested in other applications.
Molecular Weight	74kDa

Background

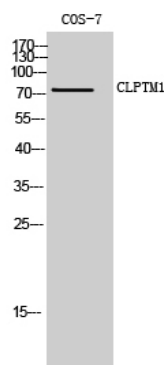
function:May play a role in T-cell development.,miscellaneous:A chromosomal translocation involving CLPTM1 is found in a family with cleft lip and palate. However, no etiologic link with the disease is characterized. Translocation t(2;19)(q11.2;q13.3).,similarity:Belongs to the CLPTM1 family.,tissue specificity:Widely expressed.,function:May play a role in T-cell development.,miscellaneous:A chromosomal translocation involving CLPTM1 is found in a family with cleft lip and palate. However, no etiologic link with the disease is characterized. Translocation t(2;19)(q11.2;q13.3).,similarity:Belongs to the CLPTM1 family.,tissue specificity:Widely expressed.,

Research Area

Image Data



Western blot analysis of lysates from COS7 cells, using CLPT1 Antibody. The lane on the right is blocked with the synthesized peptide.



Western Blot analysis of COS-7 cells using CLPTM1 Polyclonal Antibody

Note

For research use only.

Product Name: CLPTM1 Rabbit Polyclonal Antibody
Catalog #: APRab09065

